

**Product Name: Phospho-EDG1 (Thr236) Rabbit
Polyclonal Antibody**
Catalog #: APRab00946

Summary

Production Name	Phospho-EDG1 (Thr236) Rabbit Polyclonal Antibody
Description	Primary antibody
Host	Rabbit
Application	WB, ICC/IF, ELISA
Reactivity	Human, Mouse, Rat

Performance

Conjugation	Unconjugated
Modification	Phosphorylated
Isotype	IgG
Clonality	Polyclonal Antibody
Form	Liquid
Storage	Store at 4°C short term. Aliquot and store at -20°C long term. Avoid freeze/thaw cycles.
Buffer	Liquid in PBS containing 50% glycerol, 0.5% BSA and 0.02% sodium azide, pH 7.3.
Purification	Affinity Purified

Immunogen

Gene Name	S1PR1 S1PR1; CHEDG1; EDG1; Sphingosine 1-phosphate receptor 1; S1P receptor 1; S1P1;
Alternative Names	Endothelial differentiation G-protein coupled receptor 1; Sphingosine 1-phosphate receptor Edg-1; S1P receptor Edg-1; CD antigen CD363
Gene ID	1901
SwissProt ID	P21453

Application

Dilution Ratio	WB: 1/500-1/1000 ICC: 1/100-1/200 ELISA: 1/10000
Molecular Weight	Calculated MW: 43 kDa; Observed MW: 42 kDa

Product Name: Phospho-EDG1 (Thr236) Rabbit Polyclonal Antibody
Catalog #: APRab00946



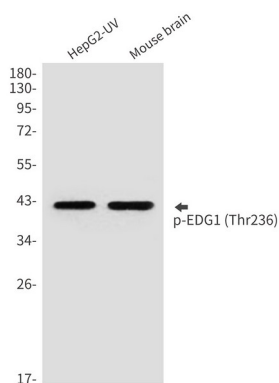
Background

Receptor for the lysosphingolipid sphingosine 1-phosphate (S1P). S1P is a bioactive lysophospholipid that elicits diverse physiological effect on most types of cells and tissues. This inducible epithelial cell G-protein-coupled receptor may be involved in the processes that regulate the differentiation of endothelial cells.

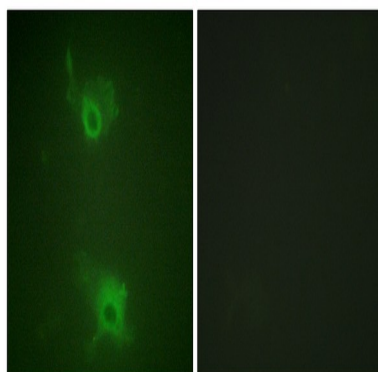
Research Area

Cell Biology

Image Data



Western blot analysis of Phospho-EDG1 (Thr236) in HepG2, mouse brain lysates using Phospho-EDG1 (Thr236) antibody.



Immunofluorescence analysis of Phospho-EDG1 (Thr236) in COS7 using Phospho-EDG1 (Thr236) antibody. The picture on the right is blocked using the Phospho-peptide.

Note

For research use only.