

**Product Name: TriMethyl-Histone H4 (Lys20) Rabbit Polyclonal Antibody**  
**Catalog #: APRab00692**

---

## Summary

|                        |   |
|------------------------|---|
| <b>Production Name</b> | TriMethyl-Histone H4 (Lys20) Rabbit Polyclonal Antibody |
| <b>Description</b>     | Primary antibody  |
| <b>Host</b>            | Rabbit  |
| <b>Application</b>     | WB,IHC-P  |
| <b>Reactivity</b>      | Human,Mouse,Rat   |

## Performance

|                     |  |
|---------------------|--|
| <b>Conjugation</b>  | Unconjugated   |
| <b>Modification</b> | Methylated   |
| <b>Isotype</b>      | IgG  |
| <b>Clonality</b>    | Polyclonal Antibody  |
| <b>Form</b>         | Liquid   |
| <b>Storage</b>      | Store at 4°C short term. Aliquot and store at -20°C long term. Avoid freeze/thaw cycles.           |
| <b>Buffer</b>       | Rabbit IgG in phosphate buffered saline , pH 7.4, 150mM NaCl, 0.02% sodium azide and 50% glycerol. |
| <b>Purification</b> | Affinity Chromatography  |

## Immunogen

|                          |  |
|--------------------------|--|
| <b>Gene Name</b>         | H4C1                                       |
| <b>Alternative Names</b> | H4K20me3; H4F2; HIST; HIST1H4A; Histone H4 |
| <b>Gene ID</b>           | 121504                                     |
| <b>SwissProt ID</b>      | P62805                                     |

## Application

|                         |  |
|-------------------------|--|
| <b>Dilution Ratio</b>   | WB: 1/500-1/1000 IHC: 1/50-1/100           |
| <b>Molecular Weight</b> | Calculated MW: 11 kDa; Observed MW: 11 kDa |

**Product Name: TriMethyl-Histone H4 (Lys20) Rabbit Polyclonal Antibody**  
**Catalog #: APRab00692**



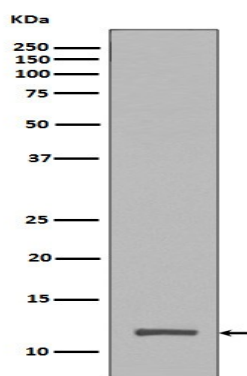
## Background

The chromatin fiber is further compacted through the interaction of a linker histone, H1, with the DNA between the nucleosomes to form higher order chromatin structures. This gene is intronless and encodes a member of the histone H4 family.

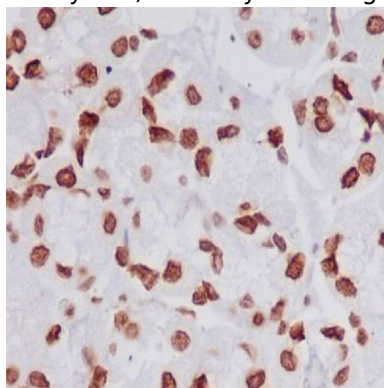
## Research Area

Epigenetics and Nuclear Signaling

## Image Data



Western blot analysis of Histone H4 (tri methyl K20) in HeLa lysates using TriMethyl-Histone H4 (Lys20) antibody.



Immunohistochemistry analysis of paraffin-embedded Human stomach using Histone H4 (tri methyl K20) antibody. High-pressure and temperature Sodium Citrate pH 6.0 was used for antigen retrieval.

## Note

For research use only.