

Product Name: CDNF Rabbit Polyclonal Antibody
Catalog #: APRab00582



Summary

Production Name	CDNF Rabbit Polyclonal Antibody
Description	Primary antibody
Host	Rabbit
Application	IHC-P,ELISA
Reactivity	Human

Performance

Conjugation	Unconjugated
Modification	Unmodified
Isotype	IgG
Clonality	Polyclonal Antibody
Form	Liquid
Storage	Store at 4°C short term. Aliquot and store at -20°C long term. Avoid freeze/thaw cycles.
Buffer	Liquid in PBS containing 50% glycerol, 0.5% BSA and 0.02% sodium azide, pH 7.3.
Purification	Affinity Purified

Immunogen

Gene Name	CDNF
Alternative Names	Cerebral dopamine neurotrophic factor (ARMET-like protein 1; Conserved dopamine neurotrophic factor)
Gene ID	441549
SwissProt ID	Q49AH0

Application

Dilution Ratio	IHC: 1/50-1/100 ELISA: 1/10000
Molecular Weight	-

Background

Product Name: CDNF Rabbit Polyclonal Antibody
Catalog #: APRab00582

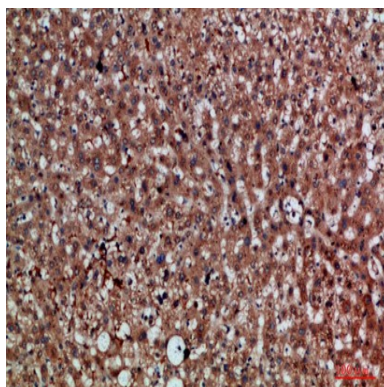


Trophic factor for dopamine neurons.

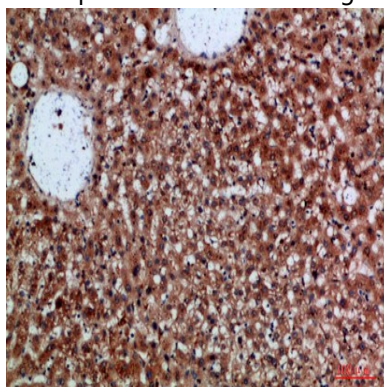
Research Area

Neuroscience

Image Data



Immunohistochemistry analysis of paraffin-embedded Human liver using CDNF antibody. High-pressure and temperature Sodium Citrate pH 6.0 was used for antigen retrieval.



Immunohistochemical analysis of paraffin-embedded Human tonsils using CDNF antibody. High-pressure and temperature Sodium Citrate pH 6.0 was used for antigen retrieval.

Note

For research use only.