

Product Name: LIF Rabbit Polyclonal Antibody
Catalog #: APRab00550

Summary

Production Name	LIF Rabbit Polyclonal Antibody
Description	Primary antibody
Host	Rabbit
Application	WB,IHC-P,ELISA
Reactivity	Human

Performance

Conjugation	Unconjugated
Modification	Unmodified
Isotype	IgG
Clonality	Polyclonal Antibody
Form	Liquid
Storage	Store at 4°C short term. Aliquot and store at -20°C long term. Avoid freeze/thaw cycles.
Buffer	Liquid in PBS containing 50% glycerol, 0.5% BSA and 0.02% sodium azide, pH 7.3.
Purification	Affinity Purified

Immunogen

Gene Name	LIF
Alternative Names	LIF; HILDA; Leukemia inhibitory factor; LIF; Differentiation-stimulating factor; D factor; Melanoma-derived LPL inhibitor; MLPLI; Emfilermin
Gene ID	3976
SwissProt ID	P15018

Application

Dilution Ratio	WB: 1/500-1/1000 IHC: 1/50-1/100 ELISA: 1/10000
Molecular Weight	Calculated MW: 22 kDa; Observed MW: 25 kDa

Background

Product Name: LIF Rabbit Polyclonal Antibody
Catalog #: APRab00550



LIF has the capacity to induce terminal differentiation in leukemic cells.

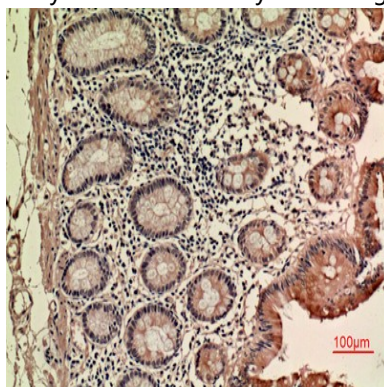
Research Area

Immunology

Image Data



Western blot analysis of LIF in K562 lysates using LIF antibody.



Immunohistochemistry analysis of paraffin-embedded Human colon using LIF antibody. High-pressure and temperature Sodium Citrate pH 6.0 was used for antigen retrieval.

Note

For research use only.