

Summary

Production Name	Dectin-2 Rabbit Polyclonal Antibody
Description	Primary antibody
Host	Rabbit
Application	WB,IHC-P,ELISA
Reactivity	Human

Performance

Conjugation	Unconjugated
Modification	Unmodified
Isotype	IgG
Clonality	Polyclonal Antibody
Form	Liquid
Storage	Store at 4°C short term. Aliquot and store at -20°C long term. Avoid freeze/thaw cycles.
Buffer	Liquid in PBS containing 50% glycerol, 0.5% BSA and 0.02% sodium azide, pH 7.3.
Purification	Affinity Purified

Immunogen

Gene Name	CLEC6A Dectin-2; CLEC6A; CLECSF10; DECTIN2; C-type lectin domain family 6 member A; C-type lectin superfamily member 10; Dendritic cell-associated C-type lectin 2; DC-associated C-type lectin 2; Dectin-2
Alternative Names	
Gene ID	93978
SwissProt ID	Q6EIG7

Application

Dilution Ratio	WB: 1/500-1/1000 IHC: 1/50-1/100 ELISA: 1/10000
Molecular Weight	Calculated MW: 24 kDa; Observed MW: 24 kDa

Product Name: Dectin-2 Rabbit Polyclonal Antibody
Catalog #: APRab00532



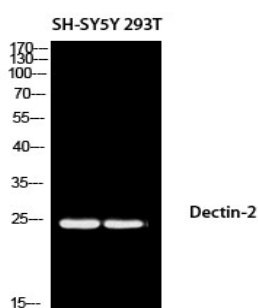
Background

Like dectin-1 (CLEC7A; MIM 606264), CLEC6A, or dectin-2, is a type II membrane receptor with an extracellular C-type lectin-like domain fold. However, unlike dectin-1, dectin-2 lacks an immunoreceptor tyrosine-based activation motif (ITAM) in its cytoplasmic domain

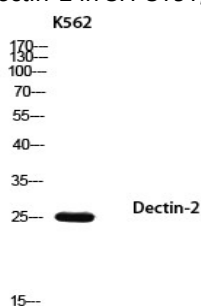
Research Area

Immunology

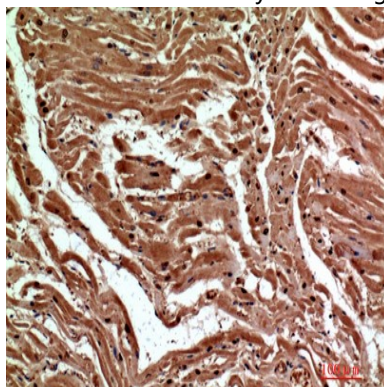
Image Data



Western blot analysis of Dectin-2 in SH-SY5Y, 293T lysates using Dectin-2 antibody.



Western blot analysis of Dectin-2 in K562 lysates using Dectin-2 antibody.



Product Name: Dectin-2 Rabbit Polyclonal Antibody
Catalog #: APRab00532



Immunohistochemistry analysis of paraffin-embedded Human heart using Dectin-2 antibody. High-pressure and temperature Sodium Citrate pH 6.0 was used for antigen retrieval.

Note

For research use only.