

**Product Name: C4A/B Rabbit Polyclonal Antibody**  
**Catalog #: APRab00500**



## Summary

|                        |                                  |
|------------------------|----------------------------------|
| <b>Production Name</b> | C4A/B Rabbit Polyclonal Antibody |
| <b>Description</b>     | Primary antibody                 |
| <b>Host</b>            | Rabbit                           |
| <b>Application</b>     | WB,IHC-P,ELISA                   |
| <b>Reactivity</b>      | Human                            |

## Performance

|                     |  |
|---------------------|--|
| <b>Conjugation</b>  | Unconjugated   |
| <b>Modification</b> | Unmodified   |
| <b>Isotype</b>      | IgG  |
| <b>Clonality</b>    | Polyclonal Antibody  |
| <b>Form</b>         | Liquid   |
| <b>Storage</b>      | Store at 4°C short term. Aliquot and store at -20°C long term. Avoid freeze/thaw cycles. |
| <b>Buffer</b>       | Liquid in PBS containing 50% glycerol, 0.5% BSA and 0.02% sodium azide, pH 7.3.          |
| <b>Purification</b> | Affinity Purified  |

## Immunogen

|                          |   |
|--------------------------|---|
| <b>Gene Name</b>         | C4A/C4B   |
| <b>Alternative Names</b> | C4A; CO4; CPAMD2; Complement C4-A; Acidic complement C4; C3 and PZP-like alpha-2-macroglobulin domain-containing protein 2; C4B; CO4; CPAMD3; Complement C4-B; Basic complement C4; C3 and PZP-like alpha-2-macroglobulin domain-containing protein 3 |
| <b>Gene ID</b>           | 720/721   |
| <b>SwissProt ID</b>      | P0C0L4/P0C0L5   |

## Application

|                         |   |
|-------------------------|---|
| <b>Dilution Ratio</b>   | WB: 1/500-1/1000 IHC: 1/50-1/100 ELISA: 1/10000 |
| <b>Molecular Weight</b> | Calculated MW: 193 kDa; Observed MW: 180 kDa    |

**Product Name: C4A/B Rabbit Polyclonal Antibody**  
**Catalog #: APRab00500**

---



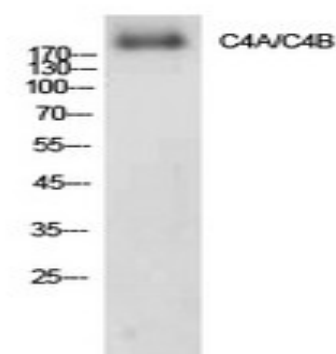
## Background

Induces the contraction of smooth muscle, increases vascular permeability and causes histamine release from mast cells and basophilic leukocytes.

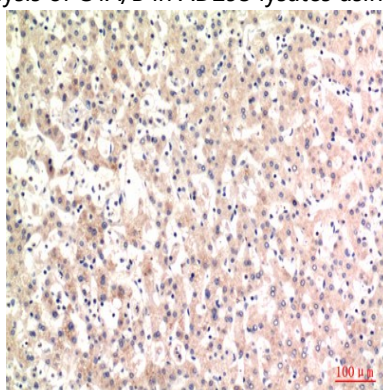
## Research Area

Immunology

## Image Data



Western blot analysis of C4A/B in AD293 lysates using C4A/B antibody.

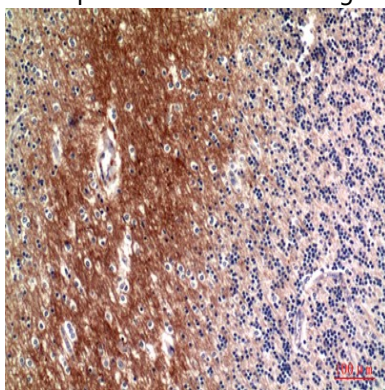


Immunohistochemistry analysis of paraffin-embedded Human liver using C4A/B antibody. High-pressure and temperature Sodium Citrate pH 6.0 was used for antigen retrieval.

**Product Name: C4A/B Rabbit Polyclonal Antibody**  
**Catalog #: APRab00500**



Immunohistochemistry analysis of paraffin-embedded Human liver using C4A/B antibody. High-pressure and temperature Sodium Citrate pH 6.0 was used for antigen retrieval.



Immunohistochemistry analysis of paraffin-embedded Human brain using C4A/B antibody. High-pressure and temperature Sodium Citrate pH 6.0 was used for antigen retrieval.

## **Note**

For research use only.