

Product Name: FGL1 Rabbit Polyclonal Antibody
Catalog #: APRab00485



Summary

Production Name	FGL1 Rabbit Polyclonal Antibody
Description	Primary antibody
Host	Rabbit
Application	WB,IHC-P,ELISA
Reactivity	Human,Mouse,Rat

Performance

Conjugation	Unconjugated
Modification	Unmodified
Isotype	IgG
Clonality	Polyclonal Antibody
Form	Liquid
Storage	Store at 4°C short term. Aliquot and store at -20°C long term. Avoid freeze/thaw cycles.
Buffer	Liquid in PBS containing 50% glycerol, 0.5% BSA and 0.02% sodium azide, pH 7.3.
Purification	Affinity Purified

Immunogen

Gene Name	FGL1
Alternative Names	FGL1; HFREP1; Fibrinogen-like protein 1; HP-041; Hepassocin; Hepatocyte-derived fibrinogen-related protein 1; HFREP-1; Liver fibrinogen-related protein 1; LFIRE-1
Gene ID	2267
SwissProt ID	Q08830

Application

Dilution Ratio	WB: 1/500-1/1000 IHC: 1/50-1/100 ELISA: 1/10000
Molecular Weight	Calculated MW: 36 kDa; Observed MW: 36 kDa

Background

Product Name: FGL1 Rabbit Polyclonal Antibody
Catalog #: APRab00485

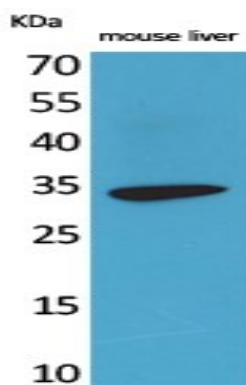


Immune suppressive molecule that inhibits antigen-specific T-cell activation by acting as a major ligand of LAG3.

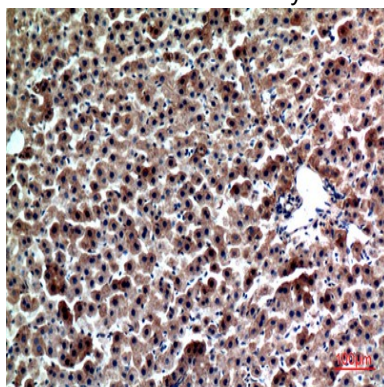
Research Area

Cardiovascular

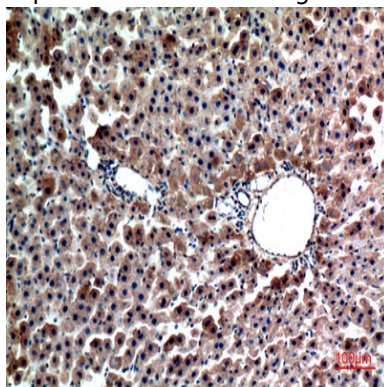
Image Data



Western blot analysis of FGL1 in mouse liver lysates using FGL1 antibody.



Immunohistochemistry analysis of paraffin-embedded rat liver using FGL1 antibody. High-pressure and temperature Sodium Citrate pH 6.0 was used for antigen retrieval.



Immunohistochemistry analysis of paraffin-embedded rat liver using FGL1 antibody. High-pressure and temperature Sodium Citrate pH 6.0 was used for antigen retrieval.

Product Name: FGL1 Rabbit Polyclonal Antibody
Catalog #: APRab00485



Immunohistochemistry analysis of paraffin-embedded mouse liver using FGL1 antibody. High-pressure and temperature Sodium Citrate pH 6.0 was used for antigen retrieval.

Note

For research use only.