

**Product Name: Fractalkine Receptor Rabbit Polyclonal Antibody**  
**Catalog #: APRab00484**

---



## Summary

<b>Production Name</b>	Fractalkine Receptor Rabbit Polyclonal Antibody
<b>Description</b>	Primary antibody
<b>Host</b>	Rabbit
<b>Application</b>	WB,IHC-P,ELISA
<b>Reactivity</b>	Human,Mouse,Rat

## Performance

<b>Conjugation</b>	Unconjugated
<b>Modification</b>	Unmodified
<b>Isotype</b>	IgG
<b>Clonality</b>	Polyclonal Antibody
<b>Form</b>	Liquid
<b>Storage</b>	Store at 4°C short term. Aliquot and store at -20°C long term. Avoid freeze/thaw cycles.
<b>Buffer</b>	Liquid in PBS containing 50% glycerol, 0.5% BSA and 0.02% sodium azide, pH 7.3.
<b>Purification</b>	Affinity Purified

## Immunogen

<b>Gene Name</b>	CX3CR1
<b>Alternative Names</b>	CX3CR1; CMKBRL1; GPR13; CX3C chemokine receptor 1; C-X3-C CKR-1; CX3CR1; Beta chemokine receptor-like 1; CMK-BRL-1; CMK-BRL1; Fractalkine receptor; G-protein coupled receptor 13; V28
<b>Gene ID</b>	1524
<b>SwissProt ID</b>	P49238

## Application

<b>Dilution Ratio</b>	WB: 1/500-1/1000 IHC: 1/50-1/100 ELISA: 1/10000
<b>Molecular Weight</b>	Calculated MW: 40 kDa; Observed MW: 40 kDa

**Product Name: Fractalkine Receptor Rabbit Polyclonal Antibody**  
**Catalog #: APRab00484**

---



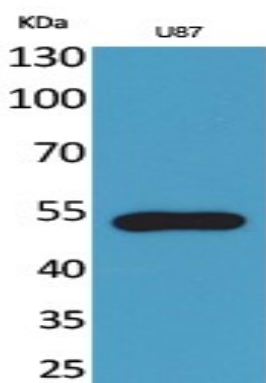
## Background

Receptor for the C-X3-C chemokine fractalkine (CX3CL1) present on many early leukocyte cells; CX3CR1-CX3CL1 signaling exerts distinct functions in different tissue compartments, such as immune response, inflammation, cell adhesion and chemotaxis.

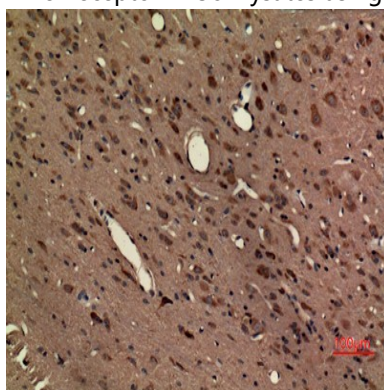
## Research Area

Microbiology

## Image Data



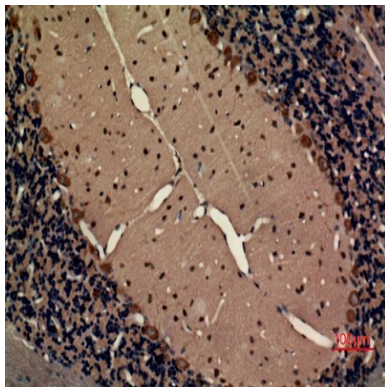
Western blot analysis of Fractalkine Receptor in U87 lysates using Fractalkine Receptor antibody.



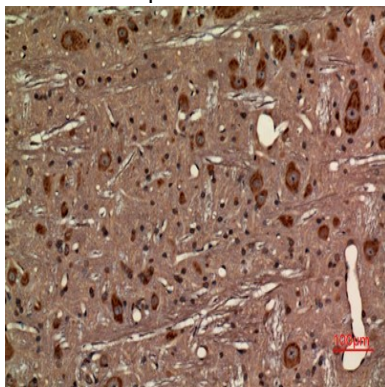
Immunohistochemistry analysis of paraffin-embedded rat brain using Fractalkine Receptor antibody. High-pressure and temperature Sodium Citrate pH 6.0 was used for antigen retrieval.

**Product Name: Fractalkine Receptor Rabbit Polyclonal  
Antibody**  
**Catalog #: APRab00484**

---



Immunohistochemistry analysis of paraffin-embedded rat brain using Fractalkine Receptor antibody. High-pressure and temperature Sodium Citrate pH 6.0 was used for antigen retrieval.



Immunohistochemistry analysis of paraffin-embedded rat brain using Fractalkine Receptor antibody. High-pressure and temperature Sodium Citrate pH 6.0 was used for antigen retrieval.

### **Note**

For research use only.