

Product Name: TLE1/2/3/4 Rabbit Polyclonal Antibody
Catalog #: APRab00477



Summary

Production Name	TLE1/2/3/4 Rabbit Polyclonal Antibody
Description	Primary antibody
Host	Rabbit
Application	WB,IHC-P,ELISA
Reactivity	Human,Mouse,Rat

Performance

Conjugation	Unconjugated
Modification	Unmodified
Isotype	IgG
Clonality	Polyclonal Antibody
Form	Liquid
Storage	Store at 4°C short term. Aliquot and store at -20°C long term. Avoid freeze/thaw cycles.
Buffer	Liquid in PBS containing 50% glycerol, 0.5% BSA and 0.02% sodium azide, pH 7.3.
Purification	Affinity Purified

Immunogen

Gene Name	TLE1/TLE2/TLE3/TLE4
Alternative Names	similar to transducin-like enhancer of split 1/2/3/4
Gene ID	7088/7089/7090/7091
SwissProt ID	Q04724/Q04725/Q04726/Q04727

Application

Dilution Ratio	WB: 1/500-1/1000 IHC: 1/50-1/100 ELISA: 1/10000
Molecular Weight	Calculated MW: 83 kDa; Observed MW: 90 kDa

Background

Transcriptional corepressor that binds to a number of transcription factors. Inhibits NF-kappa-B-regulated gene expression.

Product Name: TLE1/2/3/4 Rabbit Polyclonal Antibody
Catalog #: APRab00477

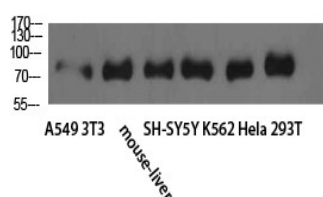


Inhibits the transcriptional activation mediated by FOXA2, and by CTNNB1 and TCF family members in Wnt signaling.

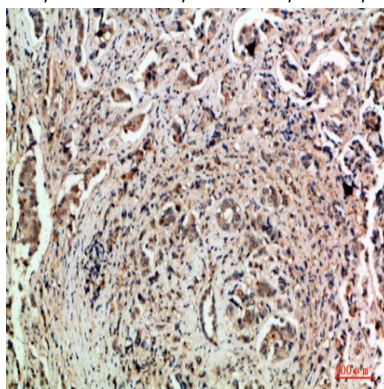
Research Area

Epigenetics and Nuclear Signaling

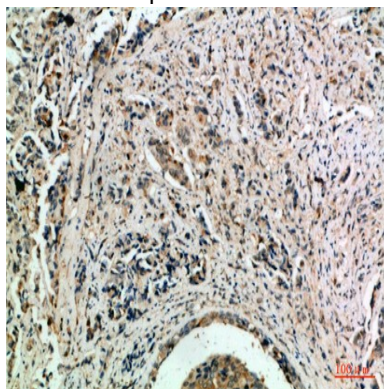
Image Data



Western blot analysis of TLE1/2/3/4 in A549, 3T3, mouse liver, SH-SY5Y, K562, HeLa, 293T lysates using TLE1/2/3/4 antibody.

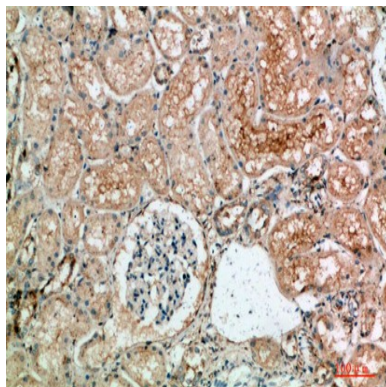


Immunohistochemistry analysis of paraffin-embedded Human breast cancer using TLE1/2/3/4 antibody. High-pressure and temperature Sodium Citrate pH 6.0 was used for antigen retrieval.

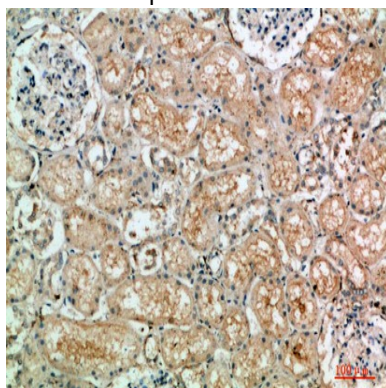


Immunohistochemistry analysis of paraffin-embedded Human breast cancer using TLE1/2/3/4 antibody. High-pressure and temperature Sodium Citrate pH 6.0 was used for antigen retrieval.

Product Name: TLE1/2/3/4 Rabbit Polyclonal Antibody
Catalog #: APRab00477



Immunohistochemistry analysis of paraffin-embedded Human kidney using TLE1/2/3/4 antibody. High-pressure and temperature Sodium Citrate pH 6.0 was used for antigen retrieval.



Immunohistochemistry analysis of paraffin-embedded Human kidney using TLE1/2/3/4 antibody. High-pressure and temperature Sodium Citrate pH 6.0 was used for antigen retrieval.

Note

For research use only.