

Product Name: LIM Kinase 2 Rabbit Polyclonal Antibody
Catalog #: AP Rab00460



Summary

Production Name	LIM Kinase 2 Rabbit Polyclonal Antibody
Description	Primary antibody
Host	Rabbit
Application	WB,IHC-P,ICC/IF
Reactivity	Human,Mouse,Rat

Performance

Conjugation	Unconjugated
Modification	Unmodified
Isotype	IgG
Clonality	Polyclonal Antibody
Form	Liquid
Storage	Store at 4°C short term. Aliquot and store at -20°C long term. Avoid freeze/thaw cycles.
Buffer	Liquid in PBS containing 50% glycerol, 0.5% BSA and 0.02% sodium azide, pH 7.3.
Purification	Affinity Purified

Immunogen

Gene Name	LIMK2
Alternative Names	LIM domain kinase 2
Gene ID	3985
SwissProt ID	P53671

Application

Dilution Ratio	WB: 1/500-1/1000 IHC: 1/50-1/100 ICC: 1/100-1/200
Molecular Weight	Calculated MW: 72 kDa; Observed MW: 72 kDa

Background

Serine/threonine-protein kinase that plays an essential role in the regulation of actin filament dynamics

Product Name: LIM Kinase 2 Rabbit Polyclonal Antibody
Catalog #: AP Rab00460

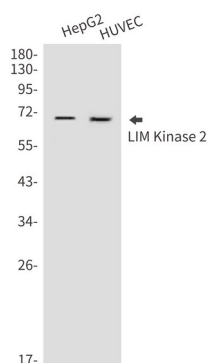


(PubMed:10436159, PubMed:11018042). Acts downstream of several Rho family GTPase signal transduction pathways (PubMed:10436159, PubMed:11018042). Involved in astral microtubule organization and mitotic spindle orientation during early stages of mitosis by mediating phosphorylation of TPPP (PubMed:22328514). Displays serine/threonine-specific phosphorylation of myelin basic protein and histone (MBP) in vitro (PubMed:8537403). Suppresses ciliogenesis via multiple pathways; phosphorylation of CFL1, suppression of directional trafficking of ciliary vesicles to the ciliary base, and by facilitating YAP1 nuclear localization where it acts as a transcriptional corepressor of the TEAD4 target genes AURKA and PLK1 (PubMed:25849865).

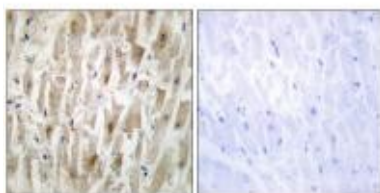
Research Area

Signal Transduction

Image Data

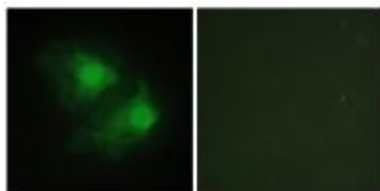


Western blot analysis of LIM Kinase 2 in HepG2, HUVEC lysates using LIM Kinase 2 antibody.



Immunohistochemistry analysis of paraffin-embedded Human heart tissue using LIMK2 antibody. High-pressure and temperature Sodium Citrate pH 6.0 was used for antigen retrieval. Sample with blocking peptide on the right.

Product Name: LIM Kinase 2 Rabbit Polyclonal Antibody
Catalog #: APRab00460



Immunofluorescence analysis of LIM Kinase 2 in Hela cells using LIMK2 antibody(green).

Note

For research use only.