

Product Name: LIM Kinase 1 Rabbit Polyclonal Antibody
Catalog #: AP Rab00458



Summary

Production Name	LIM Kinase 1 Rabbit Polyclonal Antibody
Description	Primary antibody
Host	Rabbit
Application	WB
Reactivity	Human, Mouse, Rat

Performance

Conjugation	Unconjugated
Modification	Unmodified
Isotype	IgG
Clonality	Polyclonal Antibody
Form	Liquid
Storage	Store at 4°C short term. Aliquot and store at -20°C long term. Avoid freeze/thaw cycles.
Buffer	Liquid in PBS containing 50% glycerol, 0.5% BSA and 0.02% sodium azide, pH 7.3.
Purification	Affinity Purified

Immunogen

Gene Name	LIMK1
Alternative Names	LIMK1; LIMK; LIM domain kinase 1; LIMK-1
Gene ID	3984
SwissProt ID	P53667

Application

Dilution Ratio	WB: 1/500-1/1000
Molecular Weight	Calculated MW: 73 kDa; Observed MW: 73 kDa

Background

Protein kinase which regulates actin filament dynamics. Phosphorylates and inactivates the actin binding/depolymerizing

Product Name: LIM Kinase 1 Rabbit Polyclonal Antibody
Catalog #: APRab00458

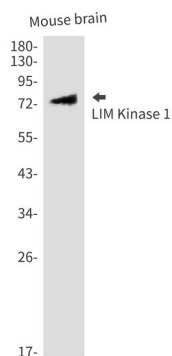


factor cofilin, thereby stabilizing the actin cytoskeleton. Stimulates axonal outgrowth and may be involved in brain development. Isoform 3 has a dominant negative effect on actin cytoskeletal changes.

Research Area

Neuroscience

Image Data



Western blot analysis of LIM Kinase 1 in mouse brain lysates using LIM Kinase 1 antibody.

Note

For research use only.