
Summary

Production Name	Bestrophin 2 Rabbit Polyclonal Antibody
Description	Primary antibody
Host	Rabbit
Application	WB,IHC-P
Reactivity	Mouse,Rat

Performance

Conjugation	Unconjugated
Modification	Unmodified
Isotype	IgG
Clonality	Polyclonal Antibody
Form	Liquid
Storage	Store at 4°C short term. Aliquot and store at -20°C long term. Avoid freeze/thaw cycles.
Buffer	Liquid in PBS containing 50% glycerol, 0.5% BSA and 0.02% sodium azide, pH 7.3.
Purification	Affinity Purified

Immunogen

Gene Name	BEST2
Alternative Names	BEST 2 antibody; FLJ20132 antibody; Vitelliform macular dystrophy 2 homolog antibody
Gene ID	54831
SwissProt ID	Q8NFU1

Application

Dilution Ratio	WB: 1/500-1/1000 IHC: 1/50-1/100
Molecular Weight	Calculated MW: 57 kDa; Observed MW: 50 kDa

Background

Product Name: Bestrophin 2 Rabbit Polyclonal Antibody
Catalog #: APRab00442

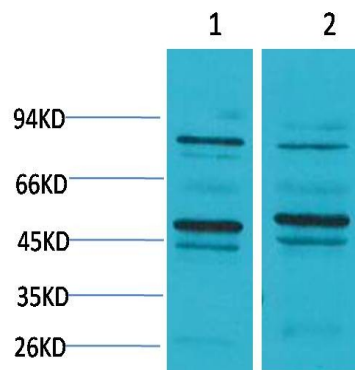


Forms calcium-sensitive chloride channels.

Research Area

Signal Transduction

Image Data



Western blot analysis of Bestrophin 2 in mouse Brain, rat Brain lysates using Bestrophin2 antibody.

Note

For research use only.