

**Product Name: Integrin beta 3 Rabbit Polyclonal Antibody**  
**Catalog #: APRab00418**

---

## Summary

<b>Production Name</b>	Integrin beta 3 Rabbit Polyclonal Antibody
<b>Description</b>	Primary antibody
<b>Host</b>	Rabbit
<b>Application</b>	WB,IHC-P,ELISA
<b>Reactivity</b>	Human

## Performance

<b>Conjugation</b>	Unconjugated
<b>Modification</b>	Unmodified
<b>Isotype</b>	IgG
<b>Clonality</b>	Polyclonal Antibody
<b>Form</b>	Liquid
<b>Storage</b>	Store at 4°C short term. Aliquot and store at -20°C long term. Avoid freeze/thaw cycles.
<b>Buffer</b>	Liquid in PBS containing 50% glycerol, 0.5% BSA and 0.02% sodium azide, pH 7.3.
<b>Purification</b>	Affinity Purified

## Immunogen

<b>Gene Name</b>	ITGB3
<b>Alternative Names</b>	ITGB3; GP3A; Integrin beta-3; Platelet membrane glycoprotein IIIa; GPIIIa; CD antigen CD61
<b>Gene ID</b>	3690
<b>SwissProt ID</b>	P05106

## Application

<b>Dilution Ratio</b>	WB: 1/500-1/1000 IHC: 1/50-1/100 ELISA: 1/10000
<b>Molecular Weight</b>	Calculated MW: 87 kDa; Observed MW: 87 kDa

**Product Name: Integrin beta 3 Rabbit Polyclonal Antibody**  
**Catalog #: APRab00418**



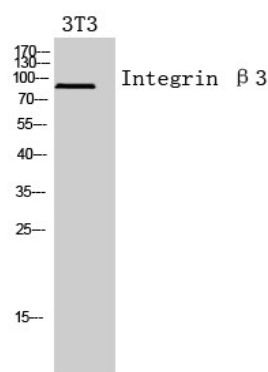
## Background

Integrin alpha-IIb/beta-3 recognizes the sequence H-H-L-G-G-G-A-K-Q-A-G-D-V in fibrinogen gamma chain. Following activation integrin alpha-IIb/beta-3 brings about platelet/platelet interaction through binding of soluble fibrinogen. This step leads to rapid platelet aggregation which physically plugs ruptured endothelial surface. Fibrinogen binding enhances SELP expression in activated platelets (By similarity).

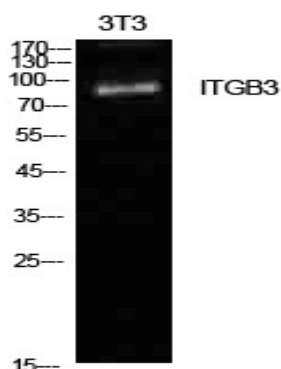
## Research Area

Cardiovascular

## Image Data



Western blot analysis of Integrin beta 3 in 3T3 lysates using Integrin beta 3 antibody.



Western blot analysis of Integrin beta 3 in NIH3T3 lysates using Integrin beta3 antibody.

## Note

For research use only.