

**Product Name: MCL1 Rabbit Polyclonal Antibody**  
**Catalog #: APRab00406**



## Summary

<b>Production Name</b>	MCL1 Rabbit Polyclonal Antibody
<b>Description</b>	Primary antibody
<b>Host</b>	Rabbit
<b>Application</b>	WB,IHC-P,ELISA
<b>Reactivity</b>	Human,Mouse,Rat

## Performance

<b>Conjugation</b>	Unconjugated
<b>Modification</b>	Unmodified
<b>Isotype</b>	IgG
<b>Clonality</b>	Polyclonal Antibody
<b>Form</b>	Liquid
<b>Storage</b>	Store at 4°C short term. Aliquot and store at -20°C long term. Avoid freeze/thaw cycles.
<b>Buffer</b>	Liquid in PBS containing 50% glycerol, 0.5% BSA and 0.02% sodium azide, pH 7.3.
<b>Purification</b>	Affinity Chromatography

## Immunogen

<b>Gene Name</b>	MCL1
<b>Alternative Names</b>	MCL1; BCL2L3; Induced myeloid leukemia cell differentiation protein Mcl-1; Bcl-2-like protein 3; Bcl2-L-3; Bcl-2-related protein EAT/mcl1; mcl1/EAT
<b>Gene ID</b>	4170
<b>SwissProt ID</b>	Q07820

## Application

<b>Dilution Ratio</b>	WB: 1/500-1/1000 IHC: 1/50-1/100 ELISA: 1/10000
<b>Molecular Weight</b>	Calculated MW: 37 kDa; Observed MW: 37 kDa

## Background

**Product Name: MCL1 Rabbit Polyclonal Antibody**  
**Catalog #: APRab00406**

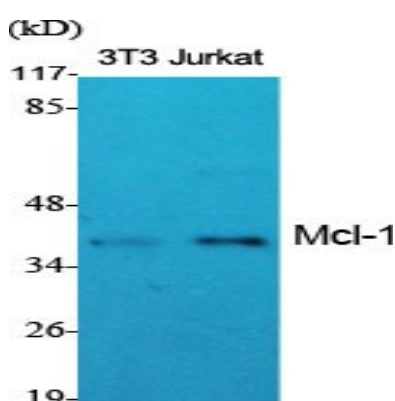


MCL1 a myeloid cell leukemia protein of the Bcl-2 family of proteins. Two alternatively spliced transcripts encoding distinct isoforms have been identified. The longer gene product (isoform 1) enhances cell survival by inhibiting apoptosis while the alternatively spliced shorter gene product (isoform 2) promotes apoptosis and is death-inducing.

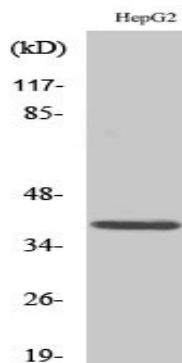
## Research Area

Cell Biology

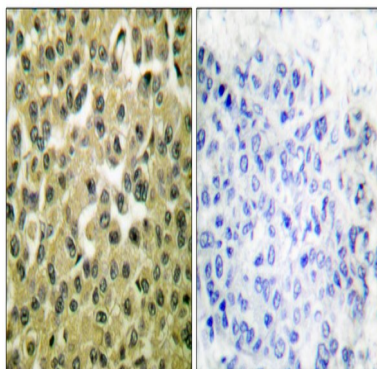
## Image Data



Western blot analysis of MCL1 in various lysates using MCL1 antibody.



Western blot analysis of MCL1 in Jurkat lysates using Mcl1 antibody.

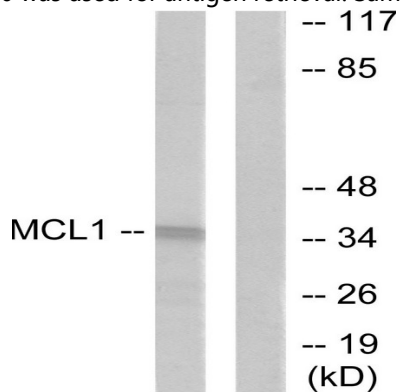


Immunohistochemistry analysis of paraffin-embedded Human breast carcinoma tissue using MCL1 antibody. High-pressure

**Product Name: MCL1 Rabbit Polyclonal Antibody**  
**Catalog #: APRab00406**



and temperature Sodium Citrate pH 6.0 was used for antigen retrieval. Sample with blocking peptide on the right.



Western blot analysis of MCL1 in HUVEC lysates using MCL1 antibody. The lane on the right is blocked with the synthesized peptide.

### **Note**

For research use only.