

Product Name: GPR158 Rabbit Polyclonal Antibody
Catalog #: APRab00401



Summary

Production Name	GPR158 Rabbit Polyclonal Antibody
Description	Primary antibody
Host	Rabbit
Application	WB,IHC-F,IHC-P,ICC/IF,ELISA
Reactivity	Human,Mouse

Performance

Conjugation	Unconjugated
Modification	Unmodified
Isotype	IgG
Clonality	Polyclonal Antibody
Form	Liquid
Storage	Store at 4°C short term. Aliquot and store at -20°C long term. Avoid freeze/thaw cycles.
Buffer	Liquid in PBS containing 50% glycerol, 0.5% BSA and 0.02% sodium azide, pH 7.3.
Purification	Affinity Chromatography

Immunogen

Gene Name	GPR158
Alternative Names	Probable G-protein coupled receptor 158
Gene ID	57512
SwissProt ID	Q5T848

Application

Dilution Ratio	WB: 1/500-1/1000 IHC: 1/50-1/100 IF: 1/50-1/200 ELISA: 1/10000
Molecular Weight	Calculated MW: 135 kDa; Observed MW: 150 kDa

Background

Orphan receptor.

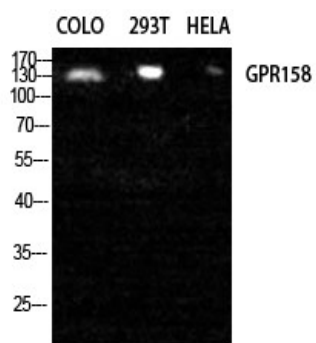
Product Name: GPR158 Rabbit Polyclonal Antibody
Catalog #: APRab00401



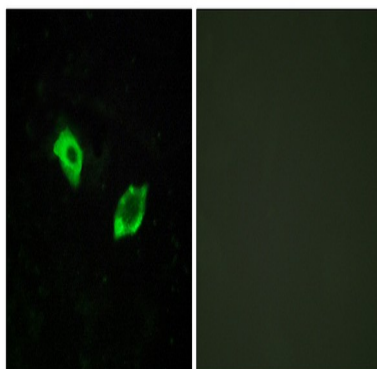
Research Area

Neuroscience

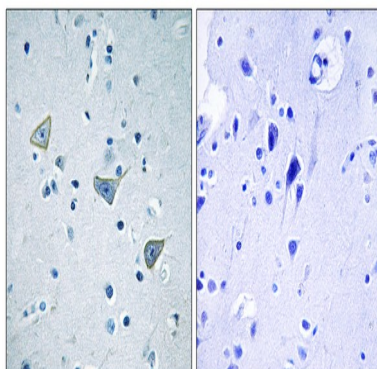
Image Data



Western blot analysis of GPR158 in COLO, 293T, HELA lysates using GPR158 antibody.

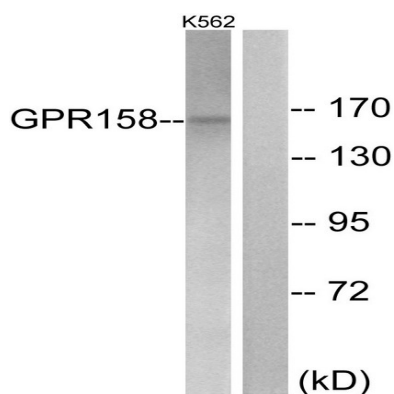


Immunofluorescence analysis of GPR158 in HUVEC using GPR158 antibody. The picture on the right is blocked using the synthesized peptide.

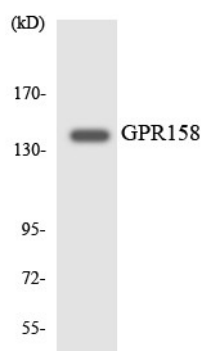


Immunohistochemistry analysis of paraffin-embedded Human brain tissue using GPR158 antibody. High-pressure and temperature Sodium Citrate pH 6.0 was used for antigen retrieval. Sample with blocking peptide on the right.

Product Name: GPR158 Rabbit Polyclonal Antibody
Catalog #: APRab00401



Western blot analysis of GPR158 in K562 lysates using GPR158 antibody. The lane on the right is blocked with the synthesized peptide.



Western blot analysis of GPR158 in HeLa using GPR158 antibody.

Note

For research use only.