

Product Name: CaMKII alpha/delta Rabbit Polyclonal Antibody
Catalog #: AP Rab00394



Summary

Production Name	CaMKII alpha/delta Rabbit Polyclonal Antibody
Description	Primary antibody
Host	Rabbit
Application	WB, IHC-F, IHC-P, ICC/IF, ELISA
Reactivity	Human, Mouse, Rat

Performance

Conjugation	Unconjugated
Modification	Unmodified
Isotype	IgG
Clonality	Polyclonal Antibody
Form	Liquid
Storage	Store at 4°C short term. Aliquot and store at -20°C long term. Avoid freeze/thaw cycles.
Buffer	Liquid in PBS containing 50% glycerol, 0.5% BSA and 0.02% sodium azide, pH 7.3.
Purification	Affinity Chromatography

Immunogen

Gene Name	CAMK2A/CAMK2D CAMK2A; CAMKA; KIAA0968; Calcium/calmodulin-dependent protein kinase type II subunit alpha; CaM kinase II subunit alpha; CaMK-II subunit alpha; CAMK2D; CAMKD; Calcium/calmodulin-dependent protein kinase type II subunit delta; CaM kinase II
Alternative Names	
Gene ID	815/817
SwissProt ID	Q9UQM7/Q13557

Application

Dilution Ratio	WB: 1/500-1/1000 IHC: 1/50-1/100 IF: 1/50-1/200 ELISA: 1/10000
Molecular Weight	Calculated MW: 54 kDa; Observed MW: 54 kDa

Product Name: CaMKII alpha/delta Rabbit Polyclonal Antibody
Catalog #: APRab00394



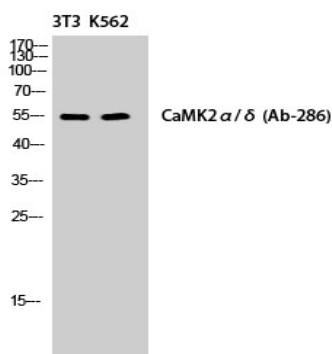
Background

The product of CAMK2A (calcium/calmodulin dependent protein kinase II alpha) belongs to the serine/threonine protein kinases family, and to the Ca(2+)/calmodulin-dependent protein kinases subfamily. Calcium signaling is crucial for several aspects of plasticity at glutamatergic synapses. This calcium calmodulin-dependent protein kinase is composed of four different chains: alpha, beta, gamma, and delta. The alpha chain encoded by this gene is required for hippocampal long-term potentiation (LTP) and spatial learning. In addition to its calcium-calmodulin (CaM)-dependent activity, this protein can undergo autophosphorylation, resulting in CaM-independent activity. Two transcript variants encoding distinct isoforms have been identified for CAMK2A.

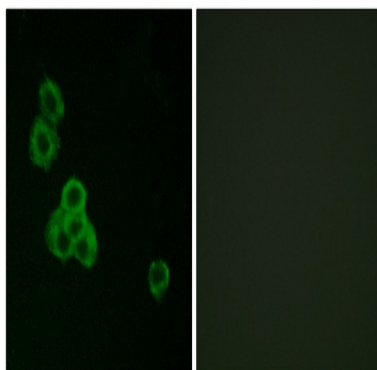
Research Area

Neuroscience

Image Data

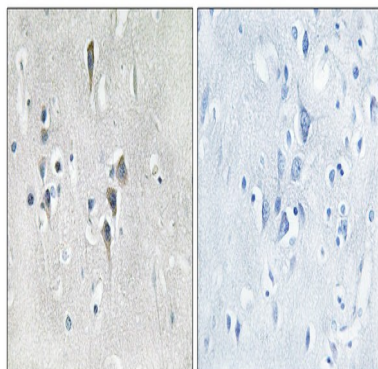


Western blot analysis of CaMKII alpha/delta in NIH3T3/K562 lysates using CaMKII alpha/delta antibody.

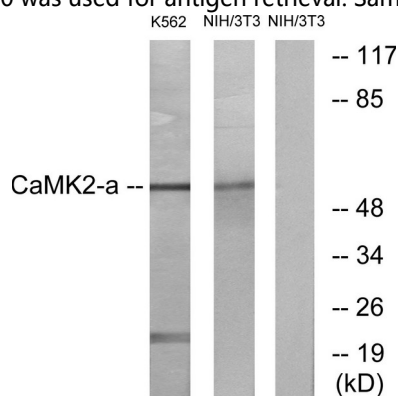


Immunofluorescence analysis of CaMKII alpha/delta in MCF-7 using CaMK2 alpha/delta antibody. The picture on the right is blocked using the synthesized peptide.

Product Name: CaMKII alpha/delta Rabbit Polyclonal Antibody
Catalog #: APRab00394



Immunohistochemistry analysis of paraffin-embedded Human brain tissue using CaMK2 alpha/delta antibody. High-pressure and temperature Sodium Citrate pH 6.0 was used for antigen retrieval. Sample with blocking peptide on the right.



Western blot analysis of CaMKII alpha/delta in NIH/3T3 and K562 lysates using CaMKII alpha/delta antibody. The lane on the right is blocked with the synthesized peptide.

Note

For research use only.