

**Product Name: VEGF Receptor 2 Rabbit Polyclonal Antibody**  
**Catalog #: APRab00366**

---

## Summary

<b>Production Name</b>	VEGF Receptor 2 Rabbit Polyclonal Antibody
<b>Description</b>	Primary antibody
<b>Host</b>	Rabbit
<b>Application</b>	WB,IP
<b>Reactivity</b>	Human

## Performance

<b>Conjugation</b>	Unconjugated
<b>Modification</b>	Unmodified
<b>Isotype</b>	IgG
<b>Clonality</b>	Polyclonal Antibody
<b>Form</b>	Liquid
<b>Storage</b>	Store at 4°C short term. Aliquot and store at -20°C long term. Avoid freeze/thaw cycles.
<b>Buffer</b>	50mM Tris-Glycine(pH 7.4), 0.15M NaCl, 40% Glycerol, 0.01% Sodium azide and 0.05% BSA
<b>Purification</b>	Affinity Purified

## Immunogen

<b>Gene Name</b>	KDR
<b>Alternative Names</b>	KDR; FLK1; VEGFR2; Vascular endothelial growth factor receptor 2; VEGFR-2; Fetal liver kinase 1; FLK-1; Kinase insert domain receptor; KDR; Protein-tyrosine kinase receptor flk-1; CD antigen CD309
<b>Gene ID</b>	3791
<b>SwissProt ID</b>	P35968

## Application

<b>Dilution Ratio</b>	WB: 1/500-1/1000 IP: 1/20
<b>Molecular Weight</b>	Calculated MW: 152 kDa; Observed MW: 230,210 kDa

---

**Product Name: VEGF Receptor 2 Rabbit Polyclonal Antibody**  
**Catalog #: APRab00366**

---



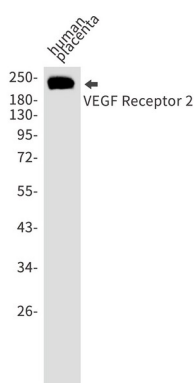
## Background

VEGFR-2 is a receptor tyrosine kinase of the VEGFR family. High affinity receptor for VEGF and VEGF-C. Ligand binding induces autophosphorylation and activation. Activated receptor recruits proteins including Shc, GRB2, PI3K, Nck, SHP-1 and SHP-2.

## Research Area

Epigenetics and Nuclear Signaling

## Image Data



Western blot analysis of VEGF Receptor 2 in Human placenta lysates using VEGF Receptor 2 antibody.

## Note

For research use only.