
Summary

Production Name	RRM1 Rabbit Polyclonal Antibody
Description	Primary antibody
Host	Rabbit
Application	WB,IHC-P,ICC/IF,FC,IP
Reactivity	Human,Mouse,Rat

Performance

Conjugation	Unconjugated
Modification	Unmodified
Isotype	IgG
Clonality	Polyclonal Antibody
Form	Liquid
Storage	Store at 4°C short term. Aliquot and store at -20°C long term. Avoid freeze/thaw cycles.
Buffer	Rabbit IgG in phosphate buffered saline , pH 7.4, 150mM NaCl, 0.02% sodium azide and 50% glycerol.
Purification	Affinity Chromatography

Immunogen

Gene Name	RRM1
Alternative Names	RRM1; R1; RIR1; RR1
Gene ID	6240
SwissProt ID	P23921

Application

Dilution Ratio	WB: 1/500-1/1000 IHC: 1/50-1/100 IF: 1/50-1/200 IP: 1/20 FC: 1/50-1/100
Molecular Weight	Calculated MW: 90 kDa; Observed MW: 90 kDa

Product Name: RRM1 Rabbit Polyclonal Antibody
Catalog #: APRab00344



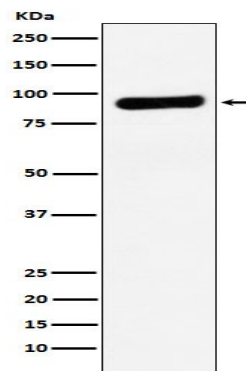
Background

Provides the precursors necessary for DNA synthesis. Catalyzes the biosynthesis of deoxyribonucleotides from the corresponding ribonucleotides.

Research Area

Epigenetics and Nuclear Signaling

Image Data



Western blot analysis of RRM1 in A549 lysates using RRM1 antibody.

Note

For research use only.