

**Product Name: KDM4A Rabbit Polyclonal Antibody**  
**Catalog #: APRab00324**



## Summary

<b>Production Name</b>	KDM4A Rabbit Polyclonal Antibody
<b>Description</b>	Primary antibody
<b>Host</b>	Rabbit
<b>Application</b>	WB,IHC-P,IP
<b>Reactivity</b>	Human,Mouse,Rat

## Performance

<b>Conjugation</b>	Unconjugated
<b>Modification</b>	Unmodified
<b>Isotype</b>	IgG
<b>Clonality</b>	Polyclonal Antibody
<b>Form</b>	Liquid
<b>Storage</b>	Store at 4°C short term. Aliquot and store at -20°C long term. Avoid freeze/thaw cycles.
<b>Buffer</b>	Rabbit IgG in phosphate buffered saline , pH 7.4, 150mM NaCl, 0.02% sodium azide and 50% glycerol.
<b>Purification</b>	Affinity Chromatography

## Immunogen

<b>Gene Name</b>	KDM4A KDM4A; JHDM3A; JMJD2; JMJD2A; KIAA0677; Lysine-specific demethylase 4A; JmjC
<b>Alternative Names</b>	domain-containing histone demethylation protein 3A; Jumonji domain-containing protein 2A
<b>Gene ID</b>	9682
<b>SwissProt ID</b>	O75164

## Application

<b>Dilution Ratio</b>	WB: 1/500-1/1000 IHC: 1/50-1/100 IP: 1/20
<b>Molecular Weight</b>	Calculated MW: 121 kDa; Observed MW: 150 kDa

**Product Name: KDM4A Rabbit Polyclonal Antibody**  
**Catalog #: APRab00324**



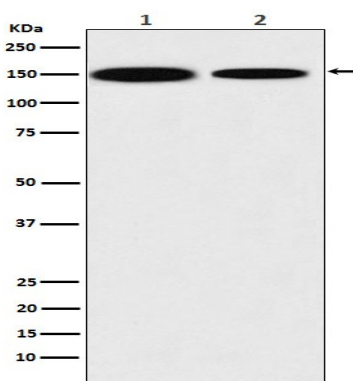
## Background

Histone demethylase that specifically demethylates 'Lys-9' and 'Lys-36' residues of histone H3, thereby playing a central role in histone code. Does not demethylate histone H3 'Lys-4', H3 'Lys-27' nor H4 'Lys-20'. Demethylates trimethylated H3 'Lys-9' and H3 'Lys-36' residue, while it has no activity on mono- and dimethylated residues.

## Research Area

Epigenetics and Nuclear Signaling

## Image Data



Western blot analysis of KDM4A / JHDM3A / JMJD2A in (1) HEK293 lysates; (2) NIH3T3 lysates using KDM4A antibody.

## Note

For research use only.