

**Product Name: Geminin Rabbit Polyclonal Antibody**  
**Catalog #: APRab00322**



## Summary

<b>Production Name</b>	Geminin Rabbit Polyclonal Antibody
<b>Description</b>	Primary antibody
<b>Host</b>	Rabbit
<b>Application</b>	WB,IHC-P,ICC/IF
<b>Reactivity</b>	Human

## Performance

<b>Conjugation</b>	Unconjugated
<b>Modification</b>	Unmodified
<b>Isotype</b>	IgG
<b>Clonality</b>	Polyclonal Antibody
<b>Form</b>	Liquid
<b>Storage</b>	Store at 4°C short term. Aliquot and store at -20°C long term. Avoid freeze/thaw cycles.
<b>Buffer</b>	Rabbit IgG in phosphate buffered saline , pH 7.4, 150mM NaCl, 0.02% sodium azide and 50% glycerol.
<b>Purification</b>	Affinity Chromatography

## Immunogen

<b>Gene Name</b>	GMNN
<b>Alternative Names</b>	Gem; Geminin; GMNN
<b>Gene ID</b>	51053
<b>SwissProt ID</b>	O75496

## Application

<b>Dilution Ratio</b>	WB: 1/500-1/1000 IHC: 1/50-1/100 IF: 1/50-1/200
<b>Molecular Weight</b>	Calculated MW: 24 kDa; Observed MW: 30 kDa

## Background

**Product Name: Geminin Rabbit Polyclonal Antibody**  
**Catalog #: APRab00322**

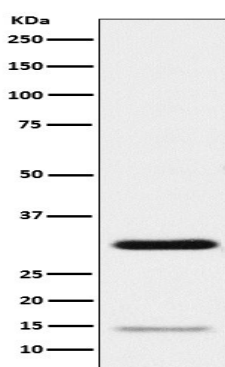


Inhibits DNA replication by preventing the incorporation of MCM complex into prereplication complex (pre-RC). It is degraded during the mitotic phase of the cell cycle. Its destruction at the metaphase-anaphase transition permits replication in the succeeding cell cycle.

## Research Area

Epigenetics and Nuclear Signaling

## Image Data



Western blot analysis of Geminin in HeLa lysates using Geminin antibody.

## Note

For research use only.