

Product Name: Proteasome beta 8 Rabbit Polyclonal Antibody
Catalog #: APRab00321

Summary

Production Name	Proteasome beta 8 Rabbit Polyclonal Antibody
Description	Primary antibody
Host	Rabbit
Application	WB,IHC-P,ICC/IF,FC,IP
Reactivity	Human,Mouse,Rat

Performance

Conjugation	Unconjugated
Modification	Unmodified
Isotype	IgG
Clonality	Polyclonal Antibody
Form	Liquid
Storage	Store at 4°C short term. Aliquot and store at -20°C long term. Avoid freeze/thaw cycles.
Buffer	Rabbit IgG in phosphate buffered saline , pH 7.4, 150mM NaCl, 0.02% sodium azide and 50% glycerol.
Purification	Affinity Chromatography

Immunogen

Gene Name	PSMB8
Alternative Names	PSMB8; LMP7; PSMB5i; RING10; Y2; Proteasome subunit beta type-8; Low molecular mass protein 7; Macropain subunit C13; Multicatalytic endopeptidase complex subunit C13; Proteasome component C13; Proteasome subunit beta-5i; Really interesting
Gene ID	5696
SwissProt ID	P28062

Application

Dilution Ratio	WB: 1/500-1/1000 IHC: 1/50-1/100 IF: 1/50-1/200 IP: 1/20 FC: 1/50-
-----------------------	--

Product Name: Proteasome beta 8 Rabbit Polyclonal Antibody
Catalog #: APRab00321



1/100

Molecular Weight

Calculated MW: 30 kDa; Observed MW: 23 kDa

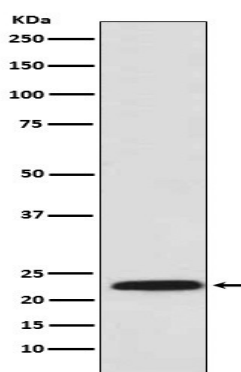
Background

The proteasome is a multicatalytic proteinase complex which is characterized by its ability to cleave peptides with Arg, Phe, Tyr, Leu, and Glu adjacent to the leaving group at neutral or slightly basic pH. The proteasome has an ATP-dependent proteolytic activity.

Research Area

Cell Biology

Image Data



Western blot analysis of Proteasome 20S LMP7 in U937 lysates using Proteasome beta 8 antibody.

Note

For research use only.