

## Summary

<b>Production Name</b>	Islet 1 Rabbit Polyclonal Antibody
<b>Description</b>	Primary antibody
<b>Host</b>	Rabbit
<b>Application</b>	WB,IHC-P,ICC/IF,FC,IP
<b>Reactivity</b>	Human

## Performance

<b>Conjugation</b>	Unconjugated
<b>Modification</b>	Unmodified
<b>Isotype</b>	IgG
<b>Clonality</b>	Polyclonal Antibody
<b>Form</b>	Liquid
<b>Storage</b>	Store at 4°C short term. Aliquot and store at -20°C long term. Avoid freeze/thaw cycles.
<b>Buffer</b>	Rabbit IgG in phosphate buffered saline , pH 7.4, 150mM NaCl, 0.02% sodium azide and 50% glycerol.
<b>Purification</b>	Affinity Chromatography

## Immunogen

<b>Gene Name</b>	ISL1
<b>Alternative Names</b>	ISL1; Insulin gene enhancer protein ISL-1; Islet-1
<b>Gene ID</b>	3670
<b>SwissProt ID</b>	P61371

## Application

<b>Dilution Ratio</b>	WB: 1/500-1/1000 IHC: 1/50-1/100 IF: 1/50-1/200 IP: 1/20 FC: 1/50-1/100
<b>Molecular Weight</b>	Calculated MW: 39 kDa; Observed MW: 39 kDa

**Product Name: Islet 1 Rabbit Polyclonal Antibody**  
**Catalog #: APRab00311**



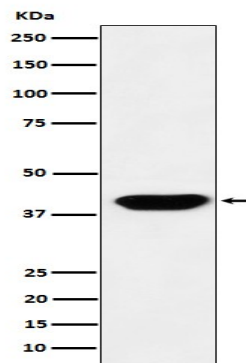
## Background

ISL1 (ISL1 transcription factor, LIM/homeodomain) is a member of the LIM/homeodomain family of transcription factors. It binds to the enhancer region of the insulin gene, among others, and may play an important role in regulating insulin gene expression. It is central to the development of pancreatic cell lineages and may also be required for motor neuron generation. Islet-1 expression defines cardiac progenitor cell populations and is required for normal cardiac development and asymmetry.

## Research Area

Neuroscience

## Image Data



Western blot analysis of Islet1 in HeLa lysates using Islet 1 antibody.

## Note

For research use only.