

Product Name: PKC theta Rabbit Polyclonal Antibody
Catalog #: APRab00300



Summary

Production Name	PKC theta Rabbit Polyclonal Antibody
Description	Primary antibody
Host	Rabbit
Application	WB
Reactivity	Human,Mouse,Rat

Performance

Conjugation	Unconjugated
Modification	Unmodified
Isotype	IgG
Clonality	Polyclonal Antibody
Form	Liquid
Storage	Store at 4°C short term. Aliquot and store at -20°C long term. Avoid freeze/thaw cycles.
Buffer	Rabbit IgG in phosphate buffered saline , pH 7.4, 150mM NaCl, 0.02% sodium azide and 50% glycerol.
Purification	Affinity Chromatography

Immunogen

Gene Name	PRKCQ
Alternative Names	PRKCQ; PRKCT; Protein kinase C theta type; nPKC-theta
Gene ID	5588
SwissProt ID	Q04759

Application

Dilution Ratio	WB: 1/500-1/1000
Molecular Weight	Calculated MW: 82 kDa; Observed MW: 82 kDa

Background

Product Name: PKC theta Rabbit Polyclonal Antibody
Catalog #: APRab00300

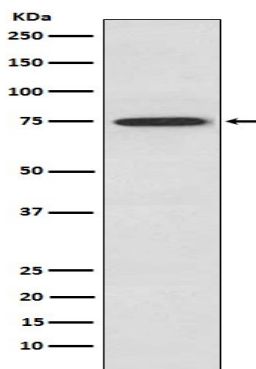


This is a calcium-independent, phospholipid-dependent, serine- and threonine-specific enzyme. Essential for T-cell receptor (TCR)-mediated T-cell activation, but is dispensable during TCR-dependent thymocyte development.

Research Area

Signal Transduction

Image Data



Western blot analysis of PKC theta in Jurkat lysates using PKC theta antibody.

Note

For research use only.