

Summary

Production Name	MBD2 Rabbit Polyclonal Antibody
Description	Primary antibody
Host	Rabbit
Application	WB,IHC-P,ICC/IF,FC,IP
Reactivity	Human,Mouse,Rat

Performance

Conjugation	Unconjugated
Modification	Unmodified
Isotype	IgG
Clonality	Polyclonal Antibody
Form	Liquid
Storage	Store at 4°C short term. Aliquot and store at -20°C long term. Avoid freeze/thaw cycles.
Buffer	Rabbit IgG in phosphate buffered saline , pH 7.4, 150mM NaCl, 0.02% sodium azide and 50% glycerol.
Purification	Affinity Chromatography

Immunogen

Gene Name	MBD2
Alternative Names	Demethylase; DMTase; Mbd2; MBD2a
Gene ID	8932
SwissProt ID	Q9UBB5

Application

Dilution Ratio	WB: 1/500-1/1000 IHC: 1/50-1/100 IF: 1/50-1/200 IP: 1/20 FC: 1/50-1/100
Molecular Weight	Calculated MW: 43 kDa; Observed MW: 29,43 kDa

Product Name: MBD2 Rabbit Polyclonal Antibody
Catalog #: APRab00280



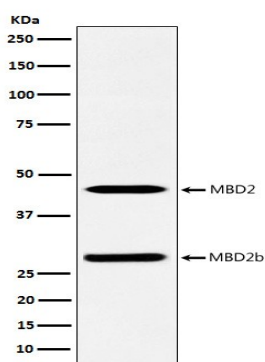
Background

Binds CpG islands in promoters where the DNA is methylated at position 5 of cytosine within CpG dinucleotides. Binds hemimethylated DNA as well. Recruits histone deacetylases and DNA methyltransferases.

Research Area

Epigenetics and Nuclear Signaling

Image Data



Western blot analysis of MBD2 in A375 lysates using MBD2 antibody.

Note

For research use only.