

Product Name: Human IgG3 Rabbit Polyclonal Antibody
Catalog #: APRab00239



Summary

Production Name	Human IgG3 Rabbit Polyclonal Antibody
Description	Primary antibody
Host	Rabbit
Application	WB,IP
Reactivity	Human

Performance

Conjugation	Unconjugated
Modification	Unmodified
Isotype	IgG
Clonality	Polyclonal Antibody
Form	Liquid
Storage	Store at 4°C short term. Aliquot and store at -20°C long term. Avoid freeze/thaw cycles.
Buffer	Rabbit IgG in phosphate buffered saline , pH 7.4, 150mM NaCl, 0.02% sodium azide and 50% glycerol.
Purification	Affinity Chromatography

Immunogen

Gene Name	IGHG3
Alternative Names	IgG3; G3m marker; HDC; Heavy chain disease protein; Ig gamma 3 chain C region; IGHG3 protein
Gene ID	3502.0
SwissProt ID	P01860

Application

Dilution Ratio	WB: 1/500-1/1000 IP: 1/20
Molecular Weight	Calculated MW: 41 kDa; Observed MW: 41 kDa

Product Name: Human IgG3 Rabbit Polyclonal Antibody
Catalog #: APRab00239



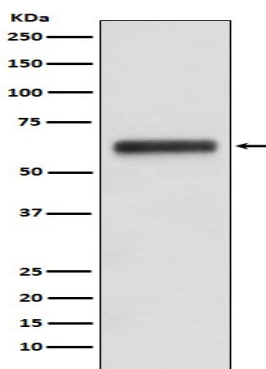
Background

IgG is a monomeric immunoglobulin, built of two heavy chains gamma and two light chains. Each molecule has two antigen binding sites. This is the most abundant immunoglobulin and is approximately equally distributed in blood and in tissue liquids, constituting 75% of serum immunoglobulins in humans.

Research Area

Immunology

Image Data



Western blot analysis of Human IgG3 in Human plasma lysates using Human IgG3 antibody.

Note

For research use only.