

## Summary

<b>Production Name</b>	RASSF1 Rabbit Polyclonal Antibody
<b>Description</b>	Primary antibody
<b>Host</b>	Rabbit
<b>Application</b>	WB,IHC-P
<b>Reactivity</b>	Human

## Performance

<b>Conjugation</b>	Unconjugated
<b>Modification</b>	Unmodified
<b>Isotype</b>	IgG
<b>Clonality</b>	Polyclonal Antibody
<b>Form</b>	Liquid
<b>Storage</b>	Store at 4°C short term. Aliquot and store at -20°C long term. Avoid freeze/thaw cycles.
<b>Buffer</b>	Rabbit IgG in phosphate buffered saline , pH 7.4, 150mM NaCl, 0.02% sodium azide and 50% glycerol.
<b>Purification</b>	Affinity Chromatography

## Immunogen

<b>Gene Name</b>	RASSF1
<b>Alternative Names</b>	RASSF1; RDA32; Ras association domain-containing protein 1
<b>Gene ID</b>	11186
<b>SwissProt ID</b>	Q9NS23

## Application

<b>Dilution Ratio</b>	WB: 1/500-1/1000 IHC: 1/50-1/100
<b>Molecular Weight</b>	Calculated MW: 39 kDa; Observed MW: 39 kDa

## Background

**Product Name: RASSF1 Rabbit Polyclonal Antibody**  
**Catalog #: APRab00226**

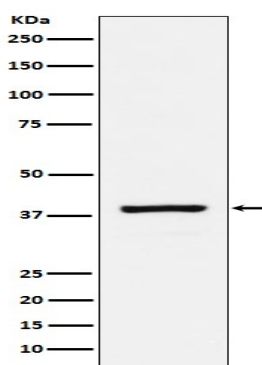


Potential tumor suppressor. Required for death receptor-dependent apoptosis. Mediates activation of STK3/MST2 and STK4/MST1 during Fas-induced apoptosis by preventing their dephosphorylation. When associated with MOAP1, promotes BAX conformational change and translocation to mitochondrial membranes in response to TNF and TNFSF10 stimulation.

## Research Area

Cell Biology

## Image Data



Western blot analysis of RASSF1 in HeLa lysates using RASSF1 antibody.

## Note

For research use only.