

Summary

Production Name	Menin Rabbit Polyclonal Antibody
Description	Primary antibody
Host	Rabbit
Application	WB,IHC-P,ICC/IF,IP
Reactivity	Human

Performance

Conjugation	Unconjugated
Modification	Unmodified
Isotype	IgG
Clonality	Polyclonal Antibody
Form	Liquid
Storage	Store at 4°C short term. Aliquot and store at -20°C long term. Avoid freeze/thaw cycles.
Buffer	Rabbit IgG in phosphate buffered saline , pH 7.4, 150mM NaCl, 0.02% sodium azide and 50% glycerol.
Purification	Affinity Chromatography

Immunogen

Gene Name	MEN1
Alternative Names	MEN1; SCG2; Menin
Gene ID	4221
SwissProt ID	O00255

Application

Dilution Ratio	WB: 1/500-1/1000 IHC: 1/50-1/100 IF: 1/50-1/200 IP: 1/20
Molecular Weight	Calculated MW: 68 kDa; Observed MW: 68 kDa

Background

Product Name: Menin Rabbit Polyclonal Antibody
Catalog #: APRab00217

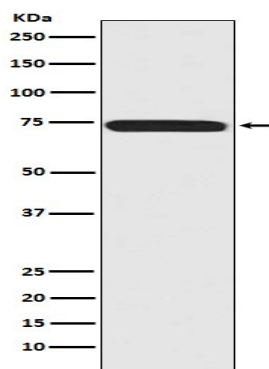


Menin, the protein product of the MEN1 gene, is a component of the mixed-lineage leukemia protein (MLL)-containing histone methyltransferase complex that facilitates methylation of histone H3 Lys4 to promote transcriptional activation. Menin functions to suppress proliferation of pancreatic islet cells, at least in part through MLL-mediated activation of the p18INK4c (p18) and p27CIP/KIP (p27) cyclin-dependent kinase inhibitor genes.

Research Area

Epigenetics and Nuclear Signaling

Image Data



Western blot analysis of Menin in 293T lysates using Menin antibody.

Note

For research use only.