

Product Name: Citrate Synthetase Rabbit Polyclonal Antibody
Catalog #: APRab00211



Summary

Production Name	Citrate Synthetase Rabbit Polyclonal Antibody
Description	Primary antibody
Host	Rabbit
Application	WB,IHC-P,ICC/IF,FC
Reactivity	Human,Mouse,Rat

Performance

Conjugation	Unconjugated
Modification	Unmodified
Isotype	IgG
Clonality	Polyclonal Antibody
Form	Liquid
Storage	Store at 4°C short term. Aliquot and store at -20°C long term. Avoid freeze/thaw cycles.
Buffer	Rabbit IgG in phosphate buffered saline , pH 7.4, 150mM NaCl, 0.02% sodium azide and 50% glycerol.
Purification	Affinity Chromatography

Immunogen

Gene Name	CS
Alternative Names	Citrate synthase; Citrate synthase; mitochondrial; Cs
Gene ID	1431
SwissProt ID	O75390

Application

Dilution Ratio	WB: 1/500-1/1000 IHC: 1/50-1/100 IF: 1/50-1/200 FC: 1/50-1/100
Molecular Weight	Calculated MW: 52 kDa; Observed MW: 45 kDa

Product Name: Citrate Synthetase Rabbit Polyclonal Antibody
Catalog #: APRab00211



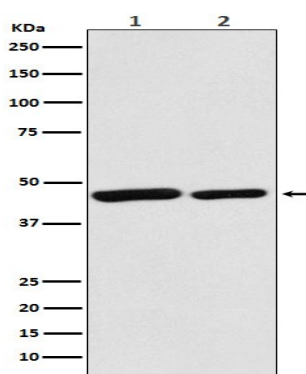
Background

Carbohydrate metabolism; tricarboxylic acid cycle; isocitrate from oxaloacetate: step 1/2.

Research Area

Signal Transduction

Image Data



Western blot analysis of Citrate synthetase in (1) HeLa lysates; (1) mouse spleen lysates using Citrate Synthetase antibody.

Note

For research use only.