

Product Name: ATG4C Rabbit Polyclonal Antibody
Catalog #: APRab00200



Summary

Production Name	ATG4C Rabbit Polyclonal Antibody
Description	Primary antibody
Host	Rabbit
Application	WB,IHC-P,FC
Reactivity	Human

Performance

Conjugation	Unconjugated
Modification	Unmodified
Isotype	IgG
Clonality	Polyclonal Antibody
Form	Liquid
Storage	Store at 4°C short term. Aliquot and store at -20°C long term. Avoid freeze/thaw cycles.
Buffer	Rabbit IgG in phosphate buffered saline , pH 7.4, 150mM NaCl, 0.02% sodium azide and 50% glycerol.
Purification	Affinity Chromatography

Immunogen

Gene Name	ATG4C
Alternative Names	ATG4C; APG4C; AUTL1; AUTL3; Cysteine protease ATG4C; AUT-like 3 cysteine endopeptidase; Autophagin-3; Autophagy-related cysteine endopeptidase 3; Autophagy-related protein 4 homolog C
Gene ID	84938
SwissProt ID	Q96DT6

Application

Dilution Ratio	WB: 1/500-1/1000 IHC: 1/50-1/100 FC: 1/50-1/100
Molecular Weight	Calculated MW: 52 kDa; Observed MW: 52 kDa

Product Name: ATG4C Rabbit Polyclonal Antibody
Catalog #: APRab00200



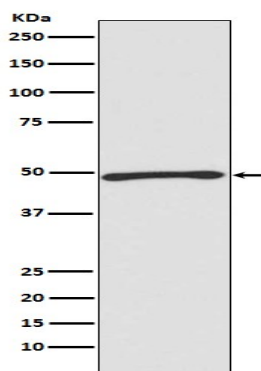
Background

Cysteine protease required for autophagy, which cleaves the C-terminal part of either MAP1LC3, GABARAPL2 or GABARAP, allowing the liberation of form I. A subpopulation of form I is subsequently converted to a smaller form (form II). Form II, with a revealed C-terminal glycine, is considered to be the phosphatidylethanolamine (PE)-conjugated form, and has the capacity for the binding to autophagosomes.

Research Area

Cell Biology

Image Data



Western blot analysis of Atg4C in Jurkat lysates using ATG4C antibody.

Note

For research use only.