

Product Name: PKA RII beta Rabbit Polyclonal Antibody
Catalog #: APRab00184



Summary

| | |
|------------------------|---|
| Production Name | PKA RII beta Rabbit Polyclonal Antibody |
| Description | Primary antibody |
| Host | Rabbit |
| Application | WB,IHC-P,ICC/IF,FC,IP |
| Reactivity | Human,Mouse,Rat |

Performance

| | |
|---------------------|--|
| Conjugation | Unconjugated |
| Modification | Unmodified |
| Isotype | IgG |
| Clonality | Polyclonal Antibody |
| Form | Liquid |
| Storage | Store at 4°C short term. Aliquot and store at -20°C long term. Avoid freeze/thaw cycles. |
| Buffer | Rabbit IgG in phosphate buffered saline , pH 7.4, 150mM NaCl, 0.02% sodium azide and 50% glycerol. |
| Purification | Affinity Chromatography |

Immunogen

| | |
|--------------------------|---|
| Gene Name | PRKAR2B |
| Alternative Names | AI451071; cAMP dependent protein kinase type II beta regulatory chain; Pkarb2; PRKAR2B; Protein kinase cAMP dependent regulatory type II beta; RATDNA; RII beta |
| Gene ID | 5577 |
| SwissProt ID | P31323 |

Application

| | |
|-------------------------|---|
| Dilution Ratio | WB: 1/500-1/1000 IHC: 1/50-1/100 IF: 1/50-1/200 IP: 1/20 FC: 1/50-1/100 |
| Molecular Weight | Calculated MW: 46 kDa; Observed MW: 46 kDa |

Product Name: PKA RII beta Rabbit Polyclonal Antibody
Catalog #: APRab00184



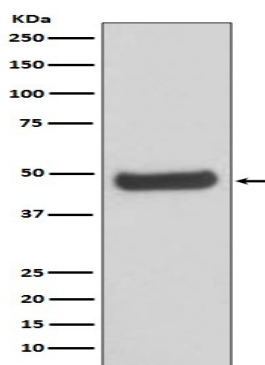
Background

Regulatory subunit of the cAMP-dependent protein kinases involved in cAMP signaling in cells. Type II regulatory chains mediate membrane association by binding to anchoring proteins, including the MAP2 kinase.

Research Area

Signal Transduction

Image Data



Western blot analysis of PKA 2 beta in Human fetal brain lysates using PKA RII beta antibody.

Note

For research use only.