

Product Name: Human IgA Rabbit Polyclonal Antibody
Catalog #: APRab00162



Summary

Production Name	Human IgA Rabbit Polyclonal Antibody
Description	Primary antibody
Host	Rabbit
Application	WB,IHC-P,ICC/IF,IP
Reactivity	Human

Performance

Conjugation	Unconjugated
Modification	Unmodified
Isotype	IgG
Clonality	Polyclonal Antibody
Form	Liquid
Storage	Store at 4°C short term. Aliquot and store at -20°C long term. Avoid freeze/thaw cycles.
Buffer	Rabbit IgG in phosphate buffered saline , pH 7.4, 150mM NaCl, 0.02% sodium azide and 50% glycerol.
Purification	Affinity Chromatography

Immunogen

Gene Name	IGHA1/IGHA2
Alternative Names	IGHA1; Ig alpha-1 chain C region; IGH A2; Ig alpha-2 chain C region
Gene ID	3493/3494
SwissProt ID	P01876/P01877

Application

Dilution Ratio	WB: 1/500-1/1000 IHC: 1/50-1/100 IF: 1/50-1/200 IP: 1/20
Molecular Weight	Calculated MW: 60 kDa; Observed MW: 60 kDa

Background

Product Name: Human IgA Rabbit Polyclonal Antibody
Catalog #: APRab00162

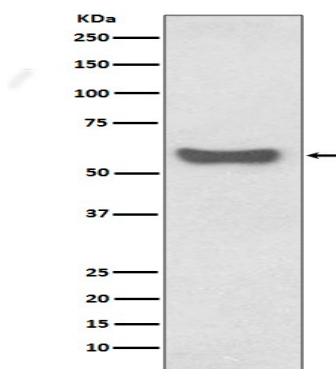


Human IgA (immunoglobulin A) is a glycosylated protein of 160 kDa and is produced as a monomer or as a J chain linked dimer. Monomeric IgA constitutes 5-15 % of the serum immunoglobulins whereas dimeric IgA is localized to mucosa surfaces such as saliva, gastrointestinal secretion, bronchial fluids and milk. Mucosal IgA plays a major role in host defence by neutralising infectious agents at mucosal surfaces.

Research Area

Immunology

Image Data



Western blot analysis of IgA in Human plasma lysates using Human IgA antibody.

Note

For research use only.