

**Product Name: SERCA2 ATPase Rabbit Polyclonal Antibody**  
**Catalog #: APRab00159**

---

## Summary

<b>Production Name</b>	SERCA2 ATPase Rabbit Polyclonal Antibody
<b>Description</b>	Primary antibody
<b>Host</b>	Rabbit
<b>Application</b>	WB,IHC-P,ICC/IF,FC
<b>Reactivity</b>	Human,Mouse,Rat

## Performance

<b>Conjugation</b>	Unconjugated
<b>Modification</b>	Unmodified
<b>Isotype</b>	IgG
<b>Clonality</b>	Polyclonal Antibody
<b>Form</b>	Liquid
<b>Storage</b>	Store at 4°C short term. Aliquot and store at -20°C long term. Avoid freeze/thaw cycles.
<b>Buffer</b>	Rabbit IgG in phosphate buffered saline , pH 7.4, 150mM NaCl, 0.02% sodium azide and 50% glycerol.
<b>Purification</b>	Affinity Chromatography

## Immunogen

<b>Gene Name</b>	ATP2A2
<b>Alternative Names</b>	ATP2A2; ATP2B; Sarcoplasmic/endoplasmic reticulum calcium ATPase 2; SERCA2; SR Ca(2+)-ATPase 2; Calcium pump 2; Calcium-transporting ATPase sarcoplasmic reticulum type; slow twitch skeletal muscle isoform; Endoplasmic reticulum class 1/2 Ca(2+) ATPase
<b>Gene ID</b>	488
<b>SwissProt ID</b>	P16615

## Application

<b>Dilution Ratio</b>	WB: 1/500-1/1000 IHC: 1/50-1/100 IF: 1/50-1/200 FC: 1/50-1/100
-----------------------	--

**Product Name: SERCA2 ATPase Rabbit Polyclonal Antibody**  
**Catalog #: APRab00159**

---

**Molecular Weight**

Calculated MW: 115 kDa; Observed MW: 110,140 kDa

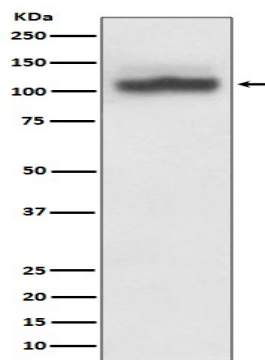
**Background**

This magnesium-dependent enzyme catalyzes the hydrolysis of ATP coupled with the translocation of calcium from the cytosol to the sarcoplasmic reticulum lumen. Isoform 2 is involved in the regulation of the contraction/relaxation cycle.

**Research Area**

Neuroscience

**Image Data**



Western blot analysis of SERCA2 in HeLa lysates using SERCA2 ATPase antibody.

**Note**

For research use only.