

Product Name: ERCC1 Rabbit Polyclonal Antibody
Catalog #: APRab00157



Summary

Production Name	ERCC1 Rabbit Polyclonal Antibody
Description	Primary antibody
Host	Rabbit
Application	WB,IHC-P,ICC/IF
Reactivity	Human,Mouse

Performance

Conjugation	Unconjugated
Modification	Unmodified
Isotype	IgG
Clonality	Polyclonal Antibody
Form	Liquid
Storage	Store at 4°C short term. Aliquot and store at -20°C long term. Avoid freeze/thaw cycles.
Buffer	Rabbit IgG in phosphate buffered saline , pH 7.4, 150mM NaCl, 0.02% sodium azide and 50% glycerol.
Purification	Affinity Chromatography

Immunogen

Gene Name	ERCC1
Alternative Names	ERCC1; DNA excision repair protein ERCC-1
Gene ID	2067
SwissProt ID	P07992

Application

Dilution Ratio	WB: 1/500-1/1000 IHC: 1/50-1/100 IF: 1/50-1/200
Molecular Weight	Calculated MW: 33 kDa; Observed MW: 36 kDa

Background

Product Name: ERCC1 Rabbit Polyclonal Antibody
Catalog #: APRab00157

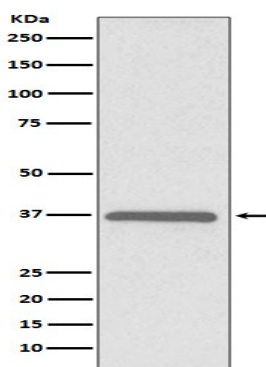


DNA repair systems operate in all living cells to manage a variety of DNA lesions. Nucleotide excision repair (NER) is implemented in cases where bulky helix-distorting lesions occur, such as those brought about by UV and certain chemicals. Research studies have shown that expression of ERCC1 is related to survival rate and response to chemotherapeutic drugs in several human cancers including non-small cell lung cancer (NSCLC).

Research Area

Epigenetics and Nuclear Signaling

Image Data



Western blot analysis of ERCC1 in HeLa lysates using ERCC1 antibody.

Note

For research use only.