

Summary

Production Name	LAMP1 Rabbit Polyclonal Antibody
Description	Primary antibody
Host	Rabbit
Application	WB,IHC-P
Reactivity	Human

Performance

Conjugation	Unconjugated
Modification	Unmodified
Isotype	IgG
Clonality	Polyclonal Antibody
Form	Liquid
Storage	Store at 4°C short term. Aliquot and store at -20°C long term. Avoid freeze/thaw cycles.
Buffer	Rabbit IgG in phosphate buffered saline , pH 7.4, 150mM NaCl, 0.02% sodium azide and 50% glycerol.
Purification	Affinity Chromatography

Immunogen

Gene Name	LAMP1
Alternative Names	LAMP1; Lysosome-associated membrane glycoprotein 1; LAMP-1; Lysosome-associated membrane protein 1; CD107 antigen-like family member A; CD107a
Gene ID	3916
SwissProt ID	P11279

Application

Dilution Ratio	WB: 1/500-1/1000 IHC: 1/50-1/100
Molecular Weight	Calculated MW: 45 kDa; Observed MW: 120 kDa

Product Name: LAMP1 Rabbit Polyclonal Antibody
Catalog #: APRab00141



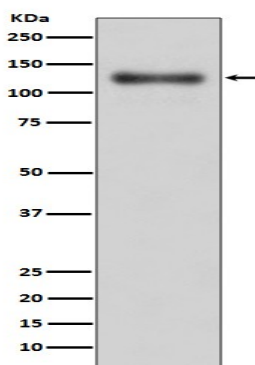
Background

LAMP1 and LAMP2 (lysosome-associated membrane protein 1 and 2) are two abundant lysosomal membrane proteins. Both are transmembrane proteins and heavily glycosylated at the amino-terminal luminal side of the lysosomal inner leaflet, which protects the proteins from proteolysis. The carboxy terminus of LAMP1 is exposed to the cytoplasm and contains a tyrosine sorting motif which targets LAMP to lysosomal membranes.

Research Area

Neuroscience

Image Data



Western blot analysis of LAMP1 in A431 lysates using LAMP1 antibody.

Note

For research use only.