

**Product Name: KMT6 Rabbit Polyclonal Antibody**  
**Catalog #: APRab00134**



## Summary

<b>Production Name</b>	KMT6 Rabbit Polyclonal Antibody
<b>Description</b>	Primary antibody
<b>Host</b>	Rabbit
<b>Application</b>	WB,IHC-P,ICC/IF,FC
<b>Reactivity</b>	Human,Mouse,Rat

## Performance

<b>Conjugation</b>	Unconjugated
<b>Modification</b>	Unmodified
<b>Isotype</b>	IgG
<b>Clonality</b>	Polyclonal Antibody
<b>Form</b>	Liquid
<b>Storage</b>	Store at 4°C short term. Aliquot and store at -20°C long term. Avoid freeze/thaw cycles.
<b>Buffer</b>	Rabbit IgG in phosphate buffered saline , pH 7.4, 150mM NaCl, 0.02% sodium azide and 50% glycerol.
<b>Purification</b>	Affinity Chromatography

## Immunogen

<b>Gene Name</b>	EZH2
<b>Alternative Names</b>	WVS; ENX1; KMT6; WVS2; ENX-1; EZH2b; KMT6A; EZH2
<b>Gene ID</b>	2146
<b>SwissProt ID</b>	Q15910

## Application

<b>Dilution Ratio</b>	WB: 1/500-1/1000 IHC: 1/50-1/100 IF: 1/50-1/200 FC: 1/50-1/100
<b>Molecular Weight</b>	Calculated MW: 85 kDa; Observed MW: 98 kDa

## Background

**Product Name: KMT6 Rabbit Polyclonal Antibody**  
**Catalog #: APRab00134**

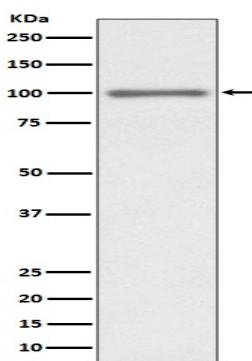


Polycomb group (PcG) protein. Catalytic subunit of the PRC2/EED-EZH2 complex, which methylates 'Lys-9' and 'Lys-27' of histone H3, leading to transcriptional repression of the affected target gene. Able to mono-, di- and trimethylate 'Lys-27' of histone H3 to form H3K27me1, H3K27me2 and H3K27me3, respectively. Compared to EZH2-containing complexes, it is more abundant in embryonic stem cells and plays a major role in forming H3K27me3, which is required for embryonic stem cell identity and proper differentiation.

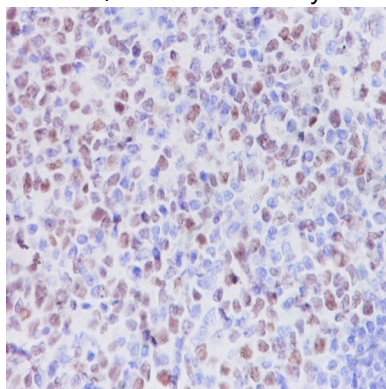
## Research Area

Epigenetics and Nuclear Signaling

## Image Data



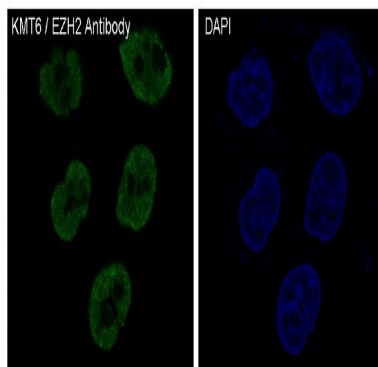
Western blot analysis of KMT6 / EZH2 in HEK293 lysates using KMT6 antibody.



Immunohistochemistry analysis of paraffin-embedded Human tonsil using KMT6 / EZH2 antibody. High-pressure and temperature Sodium Citrate pH 6.0 was used for antigen retrieval.

**Product Name: KMT6 Rabbit Polyclonal Antibody**  
**Catalog #: APRab00134**

---



Immunofluorescence analysis of KMT6 in Hela using KMT6 / EZH2 antibody.

### **Note**

For research use only.