

## Summary

<b>Production Name</b>	Mitofilin Rabbit Polyclonal Antibody
<b>Description</b>	Primary antibody
<b>Host</b>	Rabbit
<b>Application</b>	WB,IHC-P,ICC/IF,FC
<b>Reactivity</b>	Human

## Performance

<b>Conjugation</b>	Unconjugated
<b>Modification</b>	Unmodified
<b>Isotype</b>	IgG
<b>Clonality</b>	Polyclonal Antibody
<b>Form</b>	Liquid
<b>Storage</b>	Store at 4°C short term. Aliquot and store at -20°C long term. Avoid freeze/thaw cycles.
<b>Buffer</b>	Rabbit IgG in phosphate buffered saline , pH 7.4, 150mM NaCl, 0.02% sodium azide and 50% glycerol.
<b>Purification</b>	Affinity Chromatography

## Immunogen

<b>Gene Name</b>	IMMT
<b>Alternative Names</b>	HMP; P87; P89; PIG4; Mic60; PIG52; MINOS2; P87/89
<b>Gene ID</b>	10989
<b>SwissProt ID</b>	Q16891

## Application

<b>Dilution Ratio</b>	WB: 1/500-1/1000 IHC: 1/50-1/100 IF: 1/50-1/200 FC: 1/50-1/100
<b>Molecular Weight</b>	Calculated MW: 84 kDa; Observed MW: 84 kDa

## Background

**Product Name: Mitofilin Rabbit Polyclonal Antibody**  
**Catalog #: APRab00132**

---

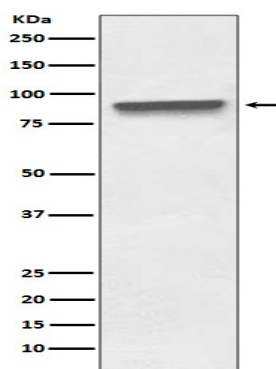


Component of the MICOS complex, a large protein complex of the mitochondrial inner membrane that plays crucial roles in the maintenance of crista junctions, inner membrane architecture, and formation of contact sites to the outer membrane. Plays an important role in the maintenance of the MICOS complex stability and the mitochondrial cristae morphology (PubMed:22114354, PubMed:25781180).

## Research Area

Signal Transduction

## Image Data



Western blot analysis of Mitofilin in HeLa lysates using Mitofilin antibody.

## Note

For research use only.