

**Product Name: CDC37 Rabbit Polyclonal Antibody**  
**Catalog #: APRab00129**



## Summary

<b>Production Name</b>	CDC37 Rabbit Polyclonal Antibody
<b>Description</b>	Primary antibody
<b>Host</b>	Rabbit
<b>Application</b>	WB,IHC-P,FC,IP
<b>Reactivity</b>	Human,Mouse,Rat

## Performance

<b>Conjugation</b>	Unconjugated
<b>Modification</b>	Unmodified
<b>Isotype</b>	IgG
<b>Clonality</b>	Polyclonal Antibody
<b>Form</b>	Liquid
<b>Storage</b>	Store at 4°C short term. Aliquot and store at -20°C long term. Avoid freeze/thaw cycles.
<b>Buffer</b>	Rabbit IgG in phosphate buffered saline , pH 7.4, 150mM NaCl, 0.02% sodium azide and 50% glycerol.
<b>Purification</b>	Affinity Chromatography

## Immunogen

<b>Gene Name</b>	CDC37
<b>Alternative Names</b>	CDC37; CDC37A; Hsp90 co-chaperone Cdc37; Hsp90 chaperone protein kinase-targeting subunit; p50Cdc37
<b>Gene ID</b>	11140
<b>SwissProt ID</b>	Q16543

## Application

<b>Dilution Ratio</b>	WB: 1/500-1/1000 IHC: 1/50-1/100 IP: 1/20 FC: 1/50-1/100
<b>Molecular Weight</b>	Calculated MW: 44 kDa; Observed MW: 50 kDa

**Product Name: CDC37 Rabbit Polyclonal Antibody**  
**Catalog #: APRab00129**



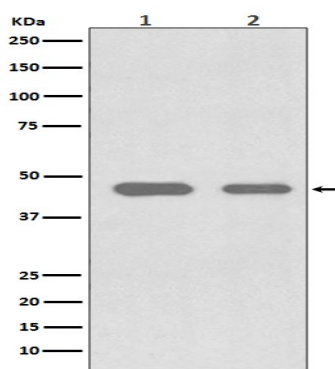
## Background

CDC37 is an important component of the HSP90 chaperone complex. It was initially identified for its involvement in cell-cycle progression and was later found to have a much broader role as a chaperone for a wide variety of kinases and other proteins. CDC37 protein has an amino-terminal kinase binding domain followed by a central HSP90 binding domain.

## Research Area

Cell Biology

## Image Data



Western blot analysis of Cdc37 in (1) Jurkat lysates; (2) SW480 lysates using CDC37 antibody.

## Note

For research use only.