

Summary

Production Name	Radixin Rabbit Polyclonal Antibody
Description	Primary antibody
Host	Rabbit
Application	WB,IHC-P,ICC/IF,FC,IP
Reactivity	Human,Mouse,Rat

Performance

Conjugation	Unconjugated
Modification	Unmodified
Isotype	IgG
Clonality	Polyclonal Antibody
Form	Liquid
Storage	Store at 4°C short term. Aliquot and store at -20°C long term. Avoid freeze/thaw cycles.
Buffer	Rabbit IgG in phosphate buffered saline , pH 7.4, 150mM NaCl, 0.02% sodium azide and 50% glycerol.
Purification	Affinity Chromatography

Immunogen

Gene Name	RDX
Alternative Names	RDX; Radixin
Gene ID	5962
SwissProt ID	P35241

Application

Dilution Ratio	WB: 1/500-1/1000 IHC: 1/50-1/100 IF: 1/50-1/200 IP: 1/20 FC: 1/50-1/100
Molecular Weight	Calculated MW: 69 kDa; Observed MW: 80 kDa

Product Name: Radixin Rabbit Polyclonal Antibody
Catalog #: APRab00079



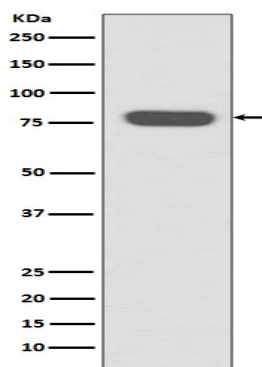
Background

Probably plays a crucial role in the binding of the barbed end of actin filaments to the plasma membrane.

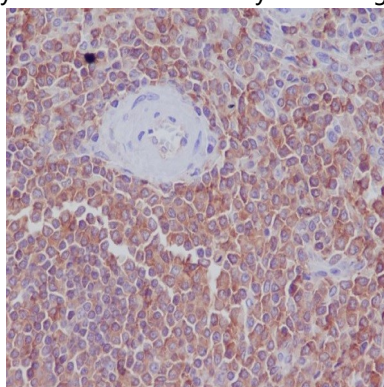
Research Area

Signal Transduction

Image Data



Western blot analysis of Radixin in HeLa lysates using Radixin antibody.



Immunohistochemistry analysis of paraffin-embedded Human spleen using Radixin antibody. High-pressure and temperature Sodium Citrate pH 6.0 was used for antigen retrieval.

Note

For research use only.