

## Summary

<b>Production Name</b>	DYNLL1 Rabbit Polyclonal Antibody
<b>Description</b>	Primary antibody
<b>Host</b>	Rabbit
<b>Application</b>	WB,IHC-P,ICC/IF,IP
<b>Reactivity</b>	Human,Mouse,Rat

## Performance

<b>Conjugation</b>	Unconjugated
<b>Modification</b>	Unmodified
<b>Isotype</b>	IgG
<b>Clonality</b>	Polyclonal Antibody
<b>Form</b>	Liquid
<b>Storage</b>	Store at 4°C short term. Aliquot and store at -20°C long term. Avoid freeze/thaw cycles.
<b>Buffer</b>	Rabbit IgG in phosphate buffered saline , pH 7.4, 150mM NaCl, 0.02% sodium azide and 50% glycerol.
<b>Purification</b>	Affinity Chromatography

## Immunogen

<b>Gene Name</b>	DYNLL1
<b>Alternative Names</b>	LC8; PIN; DLC1; DLC8; LC8a; DNCL1; hdlc1; DNCLC1
<b>Gene ID</b>	8655
<b>SwissProt ID</b>	P63167

## Application

<b>Dilution Ratio</b>	WB: 1/500-1/1000 IHC: 1/50-1/100 IF: 1/50-1/200 IP: 1/20
<b>Molecular Weight</b>	Calculated MW: 10 kDa; Observed MW: 10 kDa

## Background

**Product Name: DYNLL1 Rabbit Polyclonal Antibody**  
**Catalog #: APRab00064**

---

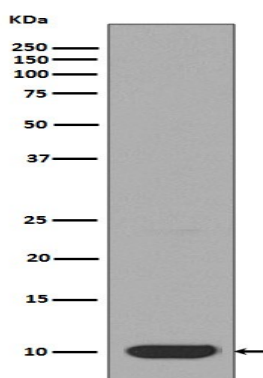


Acts as one of several non-catalytic accessory components of the cytoplasmic dynein 1 complex that are thought to be involved in linking dynein to cargos and to adapter proteins that regulate dynein function. Cytoplasmic dynein 1 acts as a motor for the intracellular retrograde motility of vesicles and organelles along microtubules. May play a role in changing or maintaining the spatial distribution of cytoskeletal structures.

## Research Area

Cell Biology

## Image Data



Western blot analysis of DYNLL1 in HeLa lysates using DYNLL1 antibody.

## Note

For research use only.