

## Summary

<b>Production Name</b>	Rab9 Rabbit Polyclonal Antibody
<b>Description</b>	Primary antibody
<b>Host</b>	Rabbit
<b>Application</b>	WB,ICC/IF
<b>Reactivity</b>	Human,Mouse,Rat

## Performance

<b>Conjugation</b>	Unconjugated
<b>Modification</b>	Unmodified
<b>Isotype</b>	IgG
<b>Clonality</b>	Polyclonal Antibody
<b>Form</b>	Liquid
<b>Storage</b>	Store at 4°C short term. Aliquot and store at -20°C long term. Avoid freeze/thaw cycles.
<b>Buffer</b>	Rabbit IgG in phosphate buffered saline , pH 7.4, 150mM NaCl, 0.02% sodium azide and 50% glycerol.
<b>Purification</b>	Affinity Chromatography

## Immunogen

<b>Gene Name</b>	RAB9A
<b>Alternative Names</b>	RAB9A; DmRab9; Ras related protein Rab 9A
<b>Gene ID</b>	9367
<b>SwissProt ID</b>	P51151

## Application

<b>Dilution Ratio</b>	WB: 1/500-1/1000 IF: 1/50-1/200
<b>Molecular Weight</b>	Calculated MW: 23 kDa; Observed MW: 23 kDa

## Background

**Product Name: Rab9 Rabbit Polyclonal Antibody**  
**Catalog #: APRab00049**

---

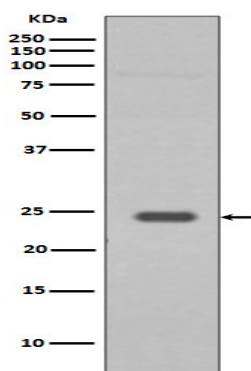


Involved in the transport of proteins between the endosomes and the trans Golgi network. Interacts (preferentially in its GTP-bound form) with GCC2 (via its GRIP domain).

## Research Area

Tags & Cell Markers

## Image Data



Western blot analysis of Rab9 in HepG2 lysates using Rab9 antibody.

## Note

For research use only.