

Summary

Production Name	IRF1 Rabbit Polyclonal Antibody
Description	Primary antibody
Host	Rabbit
Application	WB,IHC-P,ICC/IF,FC,IP
Reactivity	Human,Mouse,Rat

Performance

Conjugation	Unconjugated
Modification	Unmodified
Isotype	IgG
Clonality	Polyclonal Antibody
Form	Liquid
Storage	Store at 4°C short term. Aliquot and store at -20°C long term. Avoid freeze/thaw cycles.
Buffer	Rabbit IgG in phosphate buffered saline , pH 7.4, 150mM NaCl, 0.02% sodium azide and 50% glycerol.
Purification	Affinity Chromatography

Immunogen

Gene Name	IRF1
Alternative Names	IRF1; Interferon regulatory factor 1; IRF-1
Gene ID	3659
SwissProt ID	P10914

Application

Dilution Ratio	WB: 1/500-1/1000 IHC: 1/50-1/100 IF: 1/50-1/200 IP: 1/20 FC: 1/50-1/100
Molecular Weight	Calculated MW: 37 kDa; Observed MW: 48 kDa

Product Name: IRF1 Rabbit Polyclonal Antibody
Catalog #: APRab00047



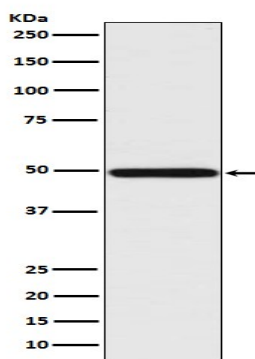
Background

Specifically binds to the upstream regulatory region of type I IFN and IFN-inducible MHC class I genes (the interferon consensus sequence (ICS)) and activates those genes. Acts as a tumor suppressor. Defects in IRF1 are a cause of gastric cancer (GASC) [MIM:613659]; also called gastric cancer intestinal or stomach cancer. Gastric cancer is a malignant disease which starts in the stomach, can spread to the esophagus or the small intestine, and can extend through the stomach wall to nearby lymph nodes and organs. It also can metastasize to other parts of the body.

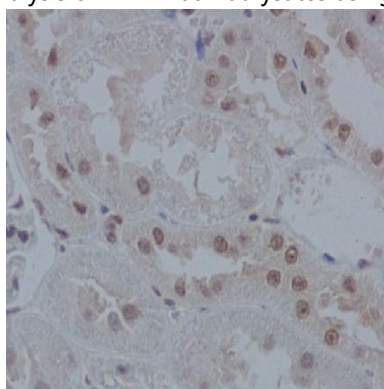
Research Area

Epigenetics and Nuclear Signaling

Image Data

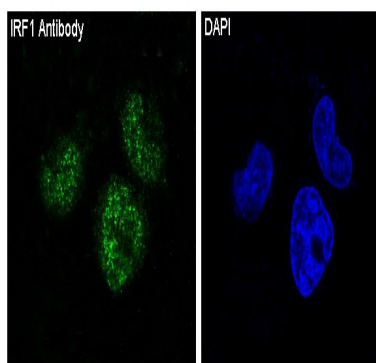


Western blot analysis of IRF1 in Jurkat lysates using IRF1 antibody.



Immunohistochemistry analysis of paraffin-embedded rat kidney using IRF1 antibody. High-pressure and temperature Sodium Citrate pH 6.0 was used for antigen retrieval.

Product Name: IRF1 Rabbit Polyclonal Antibody
Catalog #: APRab00047



Immunofluorescence analysis of IRF1 in Hela using IRF1 antibody.

Note

For research use only.