

Product Name: DARPP32 Rabbit Polyclonal Antibody
Catalog #: APRab00032



Summary

| | |
|------------------------|------------------------------------|
| Production Name | DARPP32 Rabbit Polyclonal Antibody |
| Description | Primary antibody |
| Host | Rabbit |
| Application | WB,IHC-P,ICC/IF,IP |
| Reactivity | Human,Mouse,Rat |

Performance

| | |
|---------------------|--|
| Conjugation | Unconjugated |
| Modification | Unmodified |
| Isotype | IgG |
| Clonality | Polyclonal Antibody |
| Form | Liquid |
| Storage | Store at 4°C short term. Aliquot and store at -20°C long term. Avoid freeze/thaw cycles. |
| Buffer | Rabbit IgG in phosphate buffered saline , pH 7.4, 150mM NaCl, 0.02% sodium azide and 50% glycerol. |
| Purification | Affinity Chromatography |

Immunogen

| | |
|--------------------------|---|
| Gene Name | PPP1R1B |
| Alternative Names | PPP1R1B; DARPP32; Protein phosphatase 1 regulatory subunit 1B; DARPP-32; Dopamine- and cAMP-regulated neuronal phosphoprotein |
| Gene ID | 84152 |
| SwissProt ID | Q9UD71 |

Application

| | |
|-------------------------|--|
| Dilution Ratio | WB: 1/500-1/1000 IHC: 1/50-1/100 IF: 1/50-1/200 IP: 1/20 |
| Molecular Weight | Calculated MW: 23 kDa; Observed MW: 32 kDa |

Product Name: DARPP32 Rabbit Polyclonal Antibody
Catalog #: APRab00032



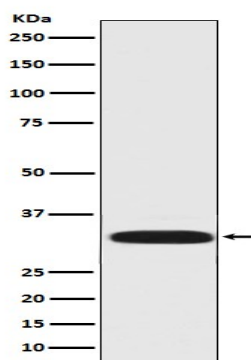
Background

DARPP-32 is a member of the protein phosphatase inhibitor 1 family. A dopamine- and cyclic AMP-regulated neuronal phosphoprotein. Both dopaminergic and glutamatergic (NMDA) receptor stimulation regulate the extent of DARPP32 phosphorylation, but in opposite directions.

Research Area

Neuroscience

Image Data



Western blot analysis of DARPP32 in rat brain lysates using DARPP32 antibody.

Note

For research use only.