

## Summary

<b>Production Name</b>	SCARB1 Rabbit Polyclonal Antibody
<b>Description</b>	Primary antibody
<b>Host</b>	Rabbit
<b>Application</b>	WB,IHC-P,ICC/IF,FC
<b>Reactivity</b>	Human,Mouse,Rat

## Performance

<b>Conjugation</b>	Unconjugated
<b>Modification</b>	Unmodified
<b>Isotype</b>	IgG
<b>Clonality</b>	Polyclonal Antibody
<b>Form</b>	Liquid
<b>Storage</b>	Store at 4°C short term. Aliquot and store at -20°C long term. Avoid freeze/thaw cycles.
<b>Buffer</b>	Rabbit IgG in phosphate buffered saline , pH 7.4, 150mM NaCl, 0.02% sodium azide and 50% glycerol.
<b>Purification</b>	Affinity Chromatography

## Immunogen

<b>Gene Name</b>	SCARB1
<b>Alternative Names</b>	CLA1; SRB1; CLA-1; SR-BI; CD36L1; HDLQTL6; Scavenging Receptor SR-BI
<b>Gene ID</b>	949
<b>SwissProt ID</b>	Q8WTV0

## Application

<b>Dilution Ratio</b>	WB: 1/500-1/1000 IHC: 1/50-1/100 IF: 1/50-1/200 FC: 1/50-1/100
<b>Molecular Weight</b>	Calculated MW: 61 kDa; Observed MW: 80 kDa

## Background

**Product Name: SCARB1 Rabbit Polyclonal Antibody**  
**Catalog #: APRab00028**

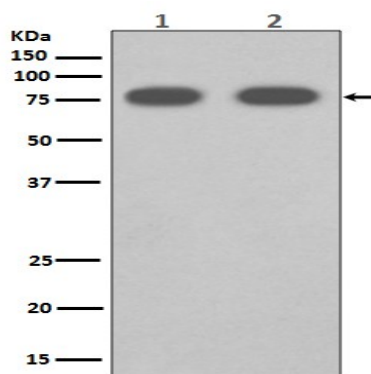


Receptor for different ligands such as phospholipids, cholesterol ester, lipoproteins, phosphatidylserine and apoptotic cells. Probable receptor for HDL, located in particular region of the plasma membrane, called caveolae. Facilitates the flux of free and esterified cholesterol between the cell surface and extracellular donors and acceptors, such as HDL and to a lesser extent, apoB-containing lipoproteins and modified lipoproteins.

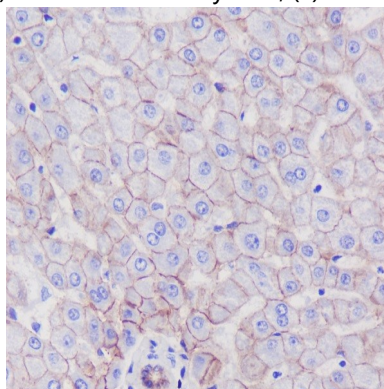
## Research Area

Microbiology

## Image Data



Western blot analysis of SCARB1 in (1) Human fetal liver lysates; (2) mouse liver lysates using SCARB1 antibody.



Immunohistochemistry analysis of paraffin-embedded Human liver using SCARB1 antibody. High-pressure and temperature Sodium Citrate pH 6.0 was used for antigen retrieval.

## Note

For research use only.