

## Summary

<b>Production Name</b>	ROCK1 Rabbit Polyclonal Antibody
<b>Description</b>	Primary antibody
<b>Host</b>	Rabbit
<b>Application</b>	WB,IHC-P,ICC/IF,FC,IP
<b>Reactivity</b>	Human,Mouse,Rat

## Performance

<b>Conjugation</b>	Unconjugated
<b>Modification</b>	Unmodified
<b>Isotype</b>	IgG
<b>Clonality</b>	Polyclonal Antibody
<b>Form</b>	Liquid
<b>Storage</b>	Store at 4°C short term. Aliquot and store at -20°C long term. Avoid freeze/thaw cycles.
<b>Buffer</b>	Rabbit IgG in phosphate buffered saline , pH 7.4, 150mM NaCl, 0.02% sodium azide and 50% glycerol.
<b>Purification</b>	Affinity Chromatography

## Immunogen

<b>Gene Name</b>	ROCK1
<b>Alternative Names</b>	ROCK1; Rho-associated protein kinase 1; Renal carcinoma antigen NY-REN-35; Rho-associated; coiled-coil-containing protein kinase 1; Rho-associated; coiled-coil-containing protein kinase I; ROCK-I; p160 ROCK-1; p160ROCK
<b>Gene ID</b>	6093
<b>SwissProt ID</b>	Q13464

## Application

<b>Dilution Ratio</b>	WB: 1/500-1/1000 IHC: 1/50-1/100 IF: 1/50-1/200 IP: 1/20 FC: 1/50-1/100
-----------------------	---

**Product Name: ROCK1 Rabbit Polyclonal Antibody**  
**Catalog #: APRab00026**



**Molecular Weight**

Calculated MW: 158 kDa; Observed MW: 158 kDa

## Background

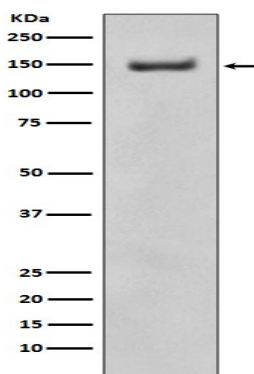
ROCK1 Protein kinase which is a key regulator of actin cytoskeleton and cell polarity. Involved in regulation of smooth muscle contraction, actin cytoskeleton organization, stress fiber and focal adhesion formation, neurite retraction, cell adhesion and motility via phosphorylation of DAPK3, GFAP, LIMK1, LIMK2, MYL9/MLC2, PFN1 and PPP1R12A.

Phosphorylates FHOD1 and acts synergistically with it to promote SRC-dependent non-apoptotic plasma membrane blebbing.

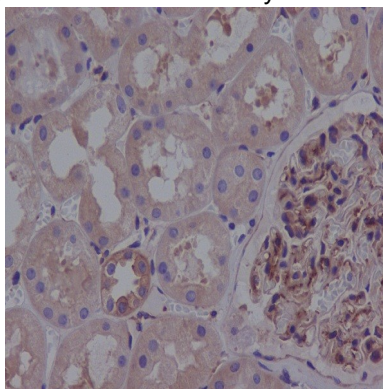
## Research Area

Signal Transduction

## Image Data



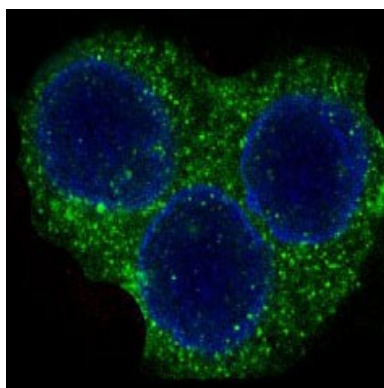
Western blot analysis of ROCK1 in Ramos lysates using ROCK1 antibody.



Immunohistochemistry analysis of paraffin-embedded Human kidney using ROCK1 antibody. High-pressure and temperature Sodium Citrate pH 6.0 was used for antigen retrieval.

**Product Name: ROCK1 Rabbit Polyclonal Antibody**  
**Catalog #: APRab00026**

---



Immunofluorescence analysis of ROCK1 in Hela using ROCK1 antibody.

**Note**

For research use only.