

**Product Name: CD146 Rabbit Polyclonal Antibody**  
**Catalog #: APRab00016**



## Summary

<b>Production Name</b>	CD146 Rabbit Polyclonal Antibody
<b>Description</b>	Primary antibody
<b>Host</b>	Rabbit
<b>Application</b>	WB,IHC-P,ICC/IF,FC,IP
<b>Reactivity</b>	Human,Mouse,Rat

## Performance

<b>Conjugation</b>	Unconjugated
<b>Modification</b>	Unmodified
<b>Isotype</b>	IgG
<b>Clonality</b>	Polyclonal Antibody
<b>Form</b>	Liquid
<b>Storage</b>	Store at 4°C short term. Aliquot and store at -20°C long term. Avoid freeze/thaw cycles.
<b>Buffer</b>	Rabbit IgG in phosphate buffered saline , pH 7.4, 150mM NaCl, 0.02% sodium azide and 50% glycerol.
<b>Purification</b>	Affinity Chromatography

## Immunogen

<b>Gene Name</b>	MCAM
<b>Alternative Names</b>	CD146; MUC18
<b>Gene ID</b>	4162
<b>SwissProt ID</b>	P43121

## Application

<b>Dilution Ratio</b>	WB: 1/500-1/1000 IHC: 1/50-1/100 IF: 1/50-1/200 IP: 1/20 FC: 1/50-1/100
<b>Molecular Weight</b>	Calculated MW: 72 kDa; Observed MW: 72 kDa

**Product Name: CD146 Rabbit Polyclonal Antibody**  
**Catalog #: APRab00016**



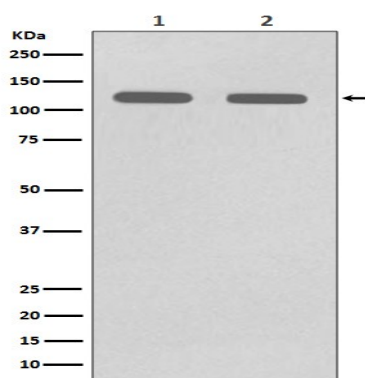
## Background

CD146 plays a role in cell adhesion, and in cohesion of the endothelial monolayer at intercellular junctions in vascular tissue. Its expression may allow melanoma cells to interact with cellular elements of the vascular system, thereby enhancing hematogeneous tumor spread. Could be an adhesion molecule active in neural crest cells during embryonic development.

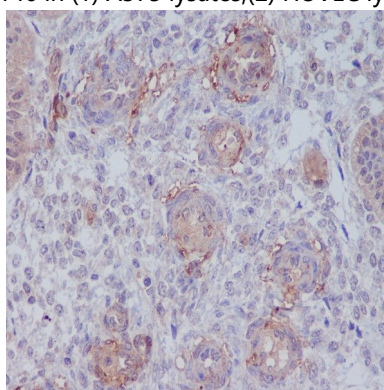
## Research Area

Immunology

## Image Data



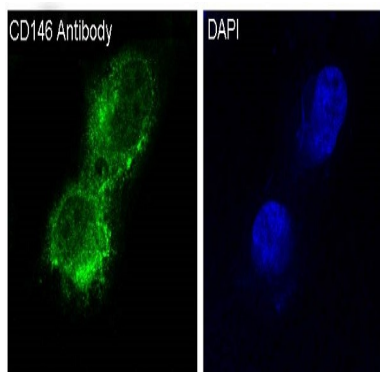
Western blot analysis of CD146 in (1) A375 lysates;(2) HUVEC lysates using CD146 antibody.



Immunohistochemistry analysis of paraffin-embedded Human uterus using CD146 antibody. High-pressure and temperature Sodium Citrate pH 6.0 was used for antigen retrieval.

**Product Name: CD146 Rabbit Polyclonal Antibody**  
**Catalog #: APRab00016**

---



Immunofluorescence analysis of CD146 in A375 using CD146 antibody.

**Note**

For research use only.