

**Product Name: KDEL Rabbit Polyclonal Antibody**  
**Catalog #: APRab00011**



## Summary

<b>Production Name</b>	KDEL Rabbit Polyclonal Antibody
<b>Description</b>	Primary antibody
<b>Host</b>	Rabbit
<b>Application</b>	WB,IHC-P,ICC/IF,FC
<b>Reactivity</b>	Human,Mouse,Rat

## Performance

<b>Conjugation</b>	Unconjugated
<b>Modification</b>	Unmodified
<b>Isotype</b>	IgG
<b>Clonality</b>	Polyclonal Antibody
<b>Form</b>	Liquid
<b>Storage</b>	Store at 4°C short term. Aliquot and store at -20°C long term. Avoid freeze/thaw cycles.
<b>Buffer</b>	Rabbit IgG in phosphate buffered saline , pH 7.4, 150mM NaCl, 0.02% sodium azide and 50% glycerol.
<b>Purification</b>	Affinity Chromatography

## Immunogen

<b>Gene Name</b>	KDEL1
<b>Alternative Names</b>	Lys-Asp-Glu-Leu (KDEL
<b>Gene ID</b>	10945
<b>SwissProt ID</b>	P24390

## Application

<b>Dilution Ratio</b>	WB: 1/500-1/1000 IHC: 1/50-1/100 IF: 1/50-1/200 FC: 1/50-1/100
<b>Molecular Weight</b>	Calculated MW: 25 kDa; Observed MW: 78KD kDa

## Background

**Product Name: KDEL Rabbit Polyclonal Antibody**  
**Catalog #: APRab00011**

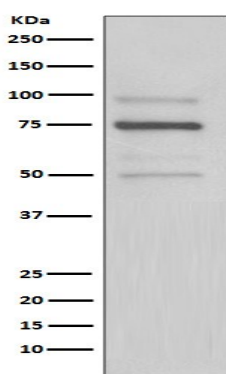


Determines the specificity of the luminal ER protein retention system. Required for the retention of luminal endoplasmic reticulum proteins. Determines the specificity of the luminal ER protein retention system. Also required for normal vesicular traffic through the Golgi. This receptor recognizes K-D-E-L.

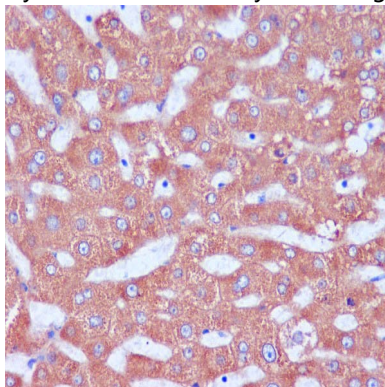
## Research Area

Tags & Cell Markers

## Image Data



Western blot analysis of KDEL in HeLa lysates using KDEL antibody.



Immunohistochemistry analysis of paraffin-embedded Human liver using KDEL antibody. High-pressure and temperature Sodium Citrate pH 6.0 was used for antigen retrieval.

## Note

For research use only.