

**Product Name: Rad51 Rabbit Polyclonal Antibody**  
**Catalog #: APRab00007**



## Summary

<b>Production Name</b>	Rad51 Rabbit Polyclonal Antibody
<b>Description</b>	Primary antibody
<b>Host</b>	Rabbit
<b>Application</b>	WB,IHC-P,ICC/IF,FC,IP
<b>Reactivity</b>	Human,Mouse,Rat

## Performance

<b>Conjugation</b>	Unconjugated
<b>Modification</b>	Unmodified
<b>Isotype</b>	IgG
<b>Clonality</b>	Polyclonal Antibody
<b>Form</b>	Liquid
<b>Storage</b>	Store at 4°C short term. Aliquot and store at -20°C long term. Avoid freeze/thaw cycles.
<b>Buffer</b>	Rabbit IgG in phosphate buffered saline , pH 7.4, 150mM NaCl, 0.02% sodium azide and 50% glycerol.
<b>Purification</b>	Affinity Chromatography

## Immunogen

<b>Gene Name</b>	RAD51
<b>Alternative Names</b>	RAD51; RAD51A; RECA; DNA repair protein RAD51 homolog 1; HsRAD51; hRAD51; RAD51 homolog A
<b>Gene ID</b>	5888
<b>SwissProt ID</b>	Q06609

## Application

<b>Dilution Ratio</b>	WB: 1/500-1/1000 IHC: 1/50-1/100 IF: 1/50-1/200 IP: 1/20 FC: 1/50-1/100
<b>Molecular Weight</b>	Calculated MW: 37 kDa; Observed MW: 37 kDa

**Product Name: Rad51 Rabbit Polyclonal Antibody**  
**Catalog #: APRab00007**



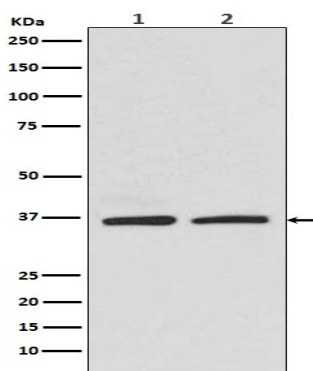
## Background

Rad51 participates in a common DNA damage response pathway associated with the activation of homologous recombination and double-strand break repair. Binds to single and double-stranded DNA and exhibits DNA-dependent ATPase activity. Underwinds duplex DNA and forms helical nucleoprotein filaments.

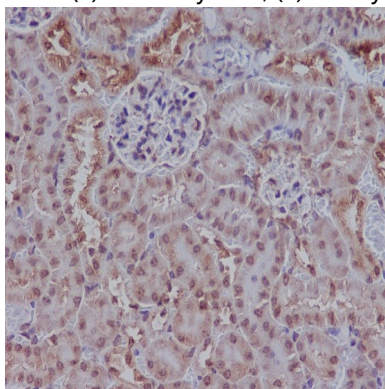
## Research Area

Epigenetics and Nuclear Signaling

## Image Data



Western blot analysis of Rad51 in (1)HEK293 lysates; (2)K562 lysates using Rad51 antibody.



Immunohistochemistry analysis of paraffin-embedded mouse kidney using Rad51 antibody. High-pressure and temperature Sodium Citrate pH 6.0 was used for antigen retrieval.

## Note

For research use only.