

**Product Name: PRC1 Rabbit Polyclonal Antibody**  
**Catalog #: APRab00002**



## Summary

<b>Production Name</b>	PRC1 Rabbit Polyclonal Antibody
<b>Description</b>	Primary antibody
<b>Host</b>	Rabbit
<b>Application</b>	WB,IHC-P,ICC/IF,FC,IP
<b>Reactivity</b>	Human,Mouse,Rat

## Performance

<b>Conjugation</b>	Unconjugated
<b>Modification</b>	Unmodified
<b>Isotype</b>	IgG
<b>Clonality</b>	Polyclonal Antibody
<b>Form</b>	Liquid
<b>Storage</b>	Store at 4°C short term. Aliquot and store at -20°C long term. Avoid freeze/thaw cycles.
<b>Buffer</b>	Rabbit IgG in phosphate buffered saline , pH 7.4, 150mM NaCl, 0.02% sodium azide and 50% glycerol.
<b>Purification</b>	Affinity Chromatography

## Immunogen

<b>Gene Name</b>	PRC1
<b>Alternative Names</b>	Protein regulator of cytokinesis 1
<b>Gene ID</b>	9055
<b>SwissProt ID</b>	O43663

## Application

<b>Dilution Ratio</b>	WB: 1/500-1/1000 IHC: 1/50-1/100 IF: 1/50-1/200 IP: 1/20 FC: 1/50-1/100
<b>Molecular Weight</b>	Calculated MW: 72 kDa; Observed MW: 72 kDa

**Product Name: PRC1 Rabbit Polyclonal Antibody**  
**Catalog #: AP Rab00002**



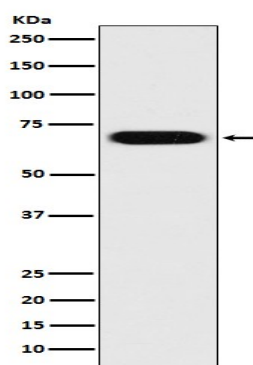
## Background

Cross-links antiparrallel microtubules at an average distance of 35 nM. Essential for controlling the spatiotemporal formation of the midzone and successful cytokinesis. Required for KIF14 localization to the central spindle and midbody.

## Research Area

Cell Biology

## Image Data



Western blot analysis of PRC1 in HeLa lysates using PRC1 antibody.

## Note

For research use only.