

Product Name: VPS35 (6J12) Rabbit Monoclonal Antibody
Catalog #: AMRe19833

Summary

Production Name	VPS35 (6J12) Rabbit Monoclonal Antibody
Description	Rabbit Monoclonal Antibody
Host	Rabbit
Application	WB
Reactivity	Human,Mouse,Rat

Performance

Conjugation	Unconjugated
Modification	Unmodified
Isotype	IgG
Clonality	Monoclonal
Form	Liquid
Storage	Store at 4°C short term. Aliquot and store at -20°C long term. Avoid freeze/thaw cycles.
Buffer	Supplied in 50mM Tris-Glycine(pH 7.4), 0.15M NaCl, 40%Glycerol, 0.01% New type preservative N and 0.05% BSA.
Purification	Affinity purification

Immunogen

Gene Name	VPS35 {ECO:0000303 PubMed:28397838, ECO:0000312 HGNC:HGNC:13487}
Alternative Names	hVPS35; MEM3; PARK17; VPS35;
Gene ID	55737.0
SwissProt ID	Q96QK1.A synthetic peptide of human VPS35

Application

Dilution Ratio	WB: 1:2000-1:10000
Molecular Weight	92kDa

Background

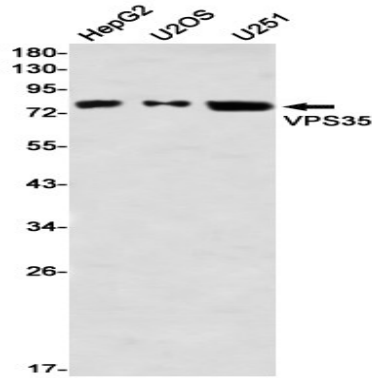
Product Name: VPS35 (6J12) Rabbit Monoclonal Antibody
Catalog #: AMRe19833

Essential component of the retromer complex, a complex required to retrieve lysosomal enzyme receptors (IGF2R and M6PR) from endosomes to the trans-Golgi network. Also required to regulate transcytosis of the polymeric immunoglobulin receptor (pIgR-pIgA). Acts as component of the retromer cargo-selective complex (CSC). The CSC is believed to be the core functional component of retromer or respective retromer complex variants acting to prevent missorting of selected transmembrane cargo proteins into the lysosomal degradation pathway. The recruitment of the CSC to the endosomal membrane involves RAB7A and SNX3. The CSC seems to associate with the cytoplasmic domain of cargo proteins predominantly via VPS35; however, these interactions seem to be of low affinity and retromer SNX proteins may also contribute to cargo selectivity thus questioning the classical function of the CSC. The SNX-BAR retromer mediates retrograde transport of cargo proteins from endosomes to the trans-Golgi network (TGN) and is involved in endosome-to-plasma membrane transport for cargo protein recycling. The SNX3-retromer mediates the retrograde endosome-to-TGN transport of WLS distinct from the SNX-BAR retromer pathway (PubMed: [30213940](http://www.uniprot.org/citations/30213940)). The SNX27-retromer is believed to be involved in endosome-to-plasma membrane trafficking and recycling of a broad spectrum of cargo proteins. The CSC seems to act as recruitment hub for other proteins, such as the WASH complex and TBC1D5 (Probable). Required for retrograde transport of lysosomal enzyme receptor IGF2R and SLC11A2. Required to regulate transcytosis of the polymeric immunoglobulin receptor (pIgR-pIgA) (PubMed: [15078903](http://www.uniprot.org/citations/15078903), PubMed: [15247922](http://www.uniprot.org/citations/15247922), PubMed: [20164305](http://www.uniprot.org/citations/20164305)). Required for endosomal localization of WASHC2 (PubMed: [22070227](http://www.uniprot.org/citations/22070227), PubMed: [28892079](http://www.uniprot.org/citations/28892079)). Mediates the association of the CSC with the WASH complex via WASHC2 (PubMed: [22070227](http://www.uniprot.org/citations/22070227), PubMed: [24980502](http://www.uniprot.org/citations/24980502), PubMed: [24819384](http://www.uniprot.org/citations/24819384)). Required for the endosomal localization of TBC1D5 (PubMed: [20923837](http://www.uniprot.org/citations/20923837)).

Research Area

Image Data

Product Name: VPS35 (6J12) Rabbit Monoclonal Antibody
Catalog #: AMRe19833



Western blot detection of VPS35 in HepG2,U2OS,U251 using VPS35 antibody(1:1000 diluted).

Note

For research use only.