

Product Name: TOMM20 (10E19) Rabbit Monoclonal Antibody
Catalog #: AMRe19121



Summary

Production Name	TOMM20 (10E19) Rabbit Monoclonal Antibody
Description	Rabbit Monoclonal Antibody
Host	Rabbit
Application	WB
Reactivity	Human,Mouse,Rat

Performance

Conjugation	Unconjugated
Modification	Unmodified
Isotype	IgG
Clonality	Monoclonal
Form	Liquid
Storage	Store at 4°C short term. Aliquot and store at -20°C long term. Avoid freeze/thaw cycles.
Buffer	Supplied in 50mM Tris-Glycine(pH 7.4), 0.15M NaCl, 40%Glycerol, 0.01% New type preservative N and 0.05% BSA.
Purification	Affinity purification

Immunogen

Gene Name	TOMM20
Alternative Names	Mitochondrial import receptor subunit TOM20 homolog; Outer mitochondrial membrane receptor Tom20;
Gene ID	9804.0
SwissProt ID	Q15388.Recombinant protein of human TOMM20

Application

Dilution Ratio	WB: 1:1000-1:5000
Molecular Weight	16kDa

Product Name: TOMM20 (10E19) Rabbit Monoclonal Antibody
Catalog #: AMRe19121

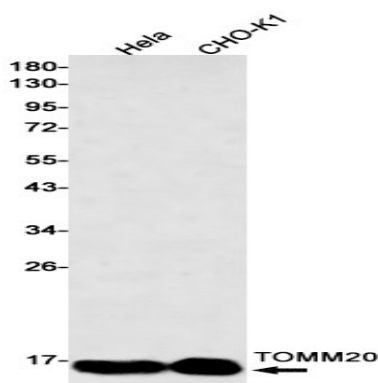


Background

Central component of the receptor complex responsible for the recognition and translocation of cytosolically synthesized mitochondrial preproteins. Together with TOM22 functions as the transit peptide receptor at the surface of the mitochondrion outer membrane and facilitates the movement of preproteins into the TOM40 translocation pore. Central component of the receptor complex responsible for the recognition and translocation of cytosolically synthesized mitochondrial preproteins. Together with TOM22 functions as the transit peptide receptor at the surface of the mitochondrion outer membrane and facilitates the movement of preproteins into the TOM40 translocation pore (By similarity). Required for the translocation across the mitochondrial outer membrane of cytochrome P450 monooxygenases.

Research Area

Image Data



Western blot detection of TOMM20 in HeLa,CHO-K1 cell lysates using TOMM20 antibody(1:500 diluted).

Note

For research use only.